

**Raccordi intermedi a "L" passaparete**

Serie leggera

**Bulkhead barrel tees**

Light range

**L-Schottverschraubungen**

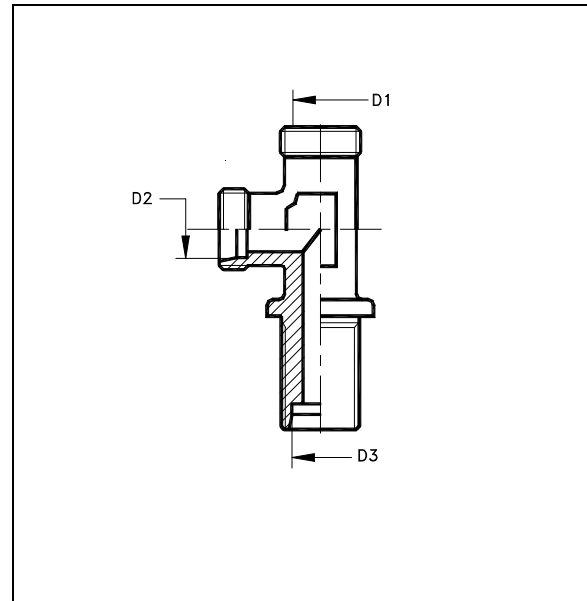
Leichte Baureihe

**Tes renversés de cloison**

Série légère

**Tes pasatabiques invertidos**

Serie ligera



D1	D2	D3		<b>TAA</b>
6	6	6	T-LSV 6-L	24700011
	10	6	T-LSVR 6/10/ 6-L	24710211
	8	6	T-LSVR 6/ 8/ 6-L	24705111
	12	12	T-LSVR 6/12/12-L	24715111
8	8	8	T-LSV 8-L	24705011
	10	8	T-LSVR 8/10/ 8-L	24705411
	8	6	T-LSVR 8/ 8/ 6-L	24705211
	6	8	T-LSVR 8/ 6/ 8-L	24705311
10	10	10	T-LSV 10-L	24710011
	8	10	T-LSVR 10/ 8/10-L	24710411
	6	10	T-LSVR 10/ 6/10-L	24710111
	10	6	T-LSVR 10/10/ 6-L	24710311
12	12	12	T-LSV 12-L	24715011
	12	10	T-LSVR 12/12/10-L	24715211
	10	10	T-LSVR 12/10/10-L	24715311
	8	12	T-LSVR 12/ 8/12-L	24715411
	6	12	T-LSVR 12/ 6/12-L	24715511
	15	12	T-LSVR 12/15/12-L	24715611

**Raccordi intermedi a "L" passaparete**

Serie leggera

**Bulkhead barrel tees**

Light range

**L-Schottverschraubungen**

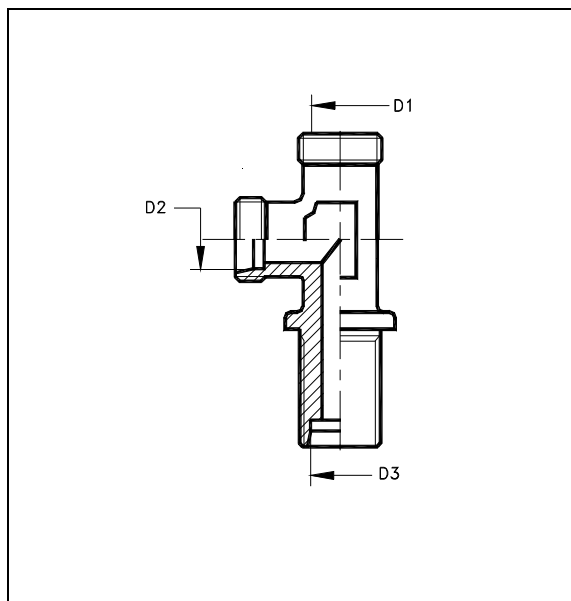
Leichte Baureihe

**Tes renversés de cloison**

Série légère

**Tes pasatabiques invertidos**

Serie ligera



D1	D2	D3		<b>TAA</b>
15	15	15	T-LSV 15-L	24720011
	12	10	T-LSVR 15/12/10-L	24720111
	10	10	T-LSVR 15/10/10-L	24720211
	8	10	T-LSVR 15/ 8/10-L	24720311
	8	12	T-LSVR 15/ 8/12-L	24720411
	6	10	T-LSVR 15/ 6/10-L	24720511
	6	12	T-LSVR 15/ 6/12-L	24720611
16	16	16	T-LSV 16-L	24766011
	12	16	T-LSVR 16/12/16-L	24766111
	10	16	T-LSVR 16/10/16-L	24766211
	8	16	T-LSVR 16/ 8/16-L	24766311
	6	16	T-LSVR 16/ 6/16-L	24766411
	12	12	T-LSVR 16/12/12-L	24766511
	10	10	T-LSVR 16/10/10-L	24766611

## Istruzione di montaggio

1. Oleare i filetti d'estremità e le 2 O-ring.
2. Infilare la vite inferiore nel corpo del raccordo ed avvitare a mano.
3. Orientare il lato collegamento tubo e serrare la vite con la coppia di serraggio prescritto (vedere generalità, controilanciando il corpo del raccordo)
4. Montare il tubo, controilanciando il corpo del raccordo.
5. Mettere il tappo e serrare con la coppia prescritta (mass. \_ giro).
6. Si può smontare e rimontare il raccordo senza limitazioni.  
Verificare lo stato degli anelli torici e sostituire se necessario.

Attenzione : Un montaggio non conforme (lubrificazione o danneggiamento dell'O-ring superiore) riduce la pressione nominale e la durata della guarnizione con rischio di perdite.

## Assembly instructions

1. Oil the threads and the 2 O-ring.
2. Insert the bolt into the banjo and tighten by hand.
3. Set the tube connection to the desired direction and tighten the bolt with the recommended tightening torque (see Technical notes) holding the banjo firmly by means of a spanner.
4. Fix the tube holding the banjo firmly by means of a spanner.
5. Set the blanking plug and tighten with the recommended tightening torque (max. \_ of turn) holding the body of the coupling firmly by means of a spanner.
6. Repeated reassembly is possible. Check seals for possible damage and replace if necessary.

Attention : Different assembly (lubrication or damaging of the O-rings) reduces the nominal pressure rating and the life of the coupling, causing leakages.