

Raccordi intermedi a "T"

Serie leggera e serie pesante

Equal tees

Light range and heavy range

T-Verschraubungen

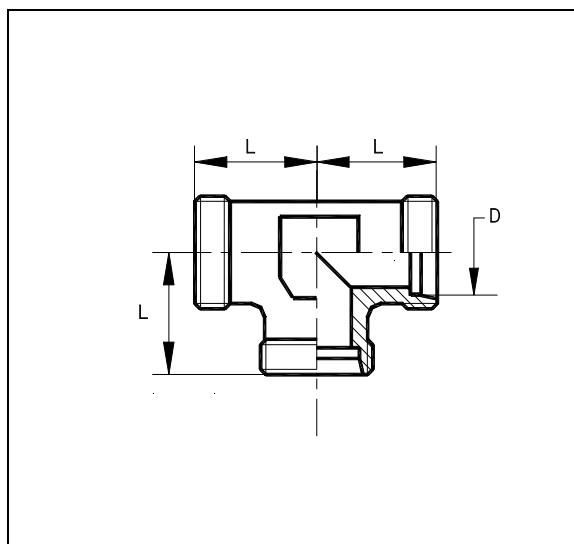
Leichte Baureihe und Schwere Baureihe

Coudes-tés égaux

Série légère et serie lourde

Tes iguales

Serie ligera y serie pesada



Serie	Ø Tubo D	L		TAA
LL	4	15	T-T 4-LL	14600011
	6	15	T-T 6-LL	14610011
	8	17	T-T 8-LL	14615011
L	6	19	T-T 6-L	14700011
	8	21	T-T 8-L	14705011
	10	22	T-T 10-L	14710011
	12	24	T-T 12-L	14715011
	14	28	T-T 14-L	14716011
	15	28	T-T 15-L	14720011
	16	28	T-T 16-L	14766011
	18	31	T-T 18-L	14725011
	22	35	T-T 22-L	14730011
	28	38	T-T 28-L	14735011
	35	45	T-T 35-L	14740011
S	42	51	T-T 42-L	14745011
	6	23	T-T 6-S	14750011
	8	24	T-T 8-S	14755011
	10	25	T-T 10-S	14760011
	12	29	T-T 12-S	14765011
	14	30	T-T 14-S	14770011
	16	33	T-T 16-S	14775011
	20	37	T-T 20-S	14780011
25	42	T-T 25-S	14785011	
30	49	T-T 30-S	14790011	
38	57	T-T 38-S	14795011	

**Raccordi intermedi a "T" di riduzione**

Serie leggera

**Tee-reducing couplings**

Light range

**T-Reduzierverschraubungen**

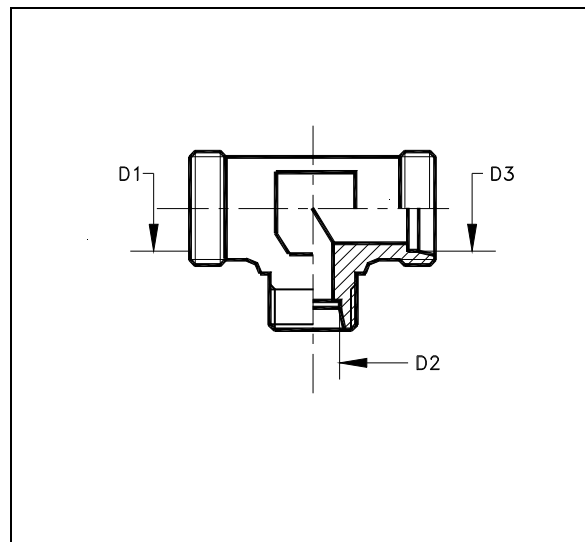
Leichte Baureihe

**Tés de réduction**

Série légère

**Tes de reducció**

Serie lligera



D1	D2	D3		<b>TAA</b>
6	6	4	T-TR 6/ 6/ 4-L	14700111
6	8	6	T-TR 6/ 8/ 6-L	14700211
6	10	6	T-TR 6/10/ 6-L	14700411
8	8	6	T-TR 8/ 8/ 6-L	14705111
	6	8	T-TR 8/ 6/ 8-L	14705211
	10	8	T-TR 8/10/ 8-L	14705411
10	10	6	T-TR 10/10/ 6-L	14710111
	6	10	T-TR 10/ 6/10-L	14710211
	8	10	T-TR 10/ 8/10-L	14710311
12	12	10	T-TR 12/12/10-L	14715111
	10	12	T-TR 12/10/12-L	14715211
	10	10	T-TR 12/10/10-L	14715311
	8	12	T-TR 12/ 8/12-L	14715411
	8	8	T-TR 12/ 8/ 8-L	14715511
	6	12	T-TR 12/ 6/12-L	14715611
	12	8	T-TR 8/12/ 8-L	14715711
	8	12		
15	15	12	T-TR 15/15/12-L	14720111
	15	10	T-TR 15/15/10-L	14720211
	12	15	T-TR 15/12/15-L	14720311
	12	12	T-TR 15/12/12-L	14720411
	10	15	T-TR 15/10/15-L	14720511
	10	10	T-TR 15/10/10-L	14720611
	12	15	T-TR 12/15/12-L	14720711
	10	15	T-TR 10/15/10-L	14720811
	15	6	T-TR 15/ 6/15-L	14720911
	15	8	T-TR 15/ 8/15-L	14721011
	15	15	T-TR 15/15/ 6-L	14721111
16	16	12	T-TR 16/16/12-L	14766111
	12	16	T-TR 16/12/16-L	14766211
	10	16	T-TR 16/10/16-L	14766311
	6	16	T-TR 16/ 6/16-L	14766411
	12	12	T-TR 16/12/12-L	14766711

**Raccordi intermedi a "T" di riduzione**

Serie leggera

**Tee-reducing couplings**

Light range

**T-Reduzierschraubungen**

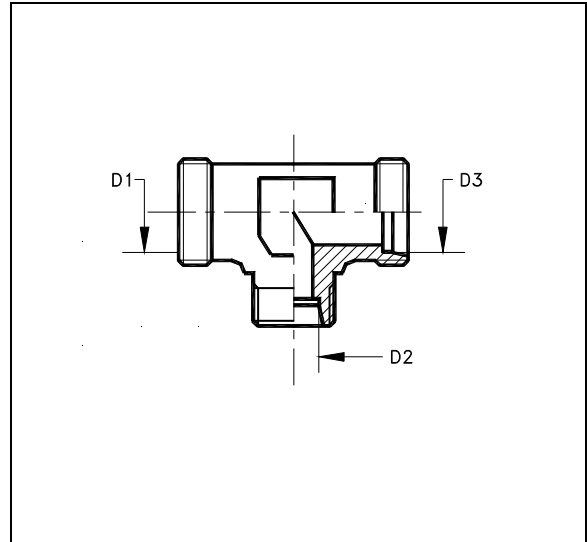
Leichte Baureihe

**Tés de réduction**

Série légère

**Tes de reducció**

Serie ligera



D1	D2	D3		taa
18	18	10	T-TR 18/18/10-L	14725111
18	15	18	T-TR 18/15/18-L	14725211
18	12	18	T-TR 18/12/18-L	14725311
18	10	18	T-TR 18/10/18-L	14725411
18	10	10	T-TR 18/10/10-L	14725511
12	18	12	T-TR 12/18/12-L	14725611
18	6	18	T-TR 18/ 6/18-L	14725711
22	22	18	T-TR 22/22/18-L	14730111
	18	22	T-TR 22/18/22-L	14730211
	18	18	T-TR 22/18/18-L	14730311
	15	22	T-TR 22/15/22-L	14730411
	15	15	T-TR 22/15/15-L	14730511
	12	22	T-TR 22/12/22-L	14730611
	10	22	T-TR 22/10/22-L	14730711
28	6	22	T-TR 22/ 6/22-L	14730811
	28	22	T-TR 22/28/22-L	14735111
	28	28	T-TR 28/28/22-L	14735211
	28	22	T-TR 28/22/28-L	14735311
	28	22	T-TR 28/22/22-L	14735411
	28	18	T-TR 28/18/28-L	14735511
	28	15	T-TR 28/15/28-L	14735611
	28	12	T-TR 28/12/28-L	14735711
35	10	28	T-TR 28/10/28-L	14735811
	6	28	T-TR 28/ 6/28-L	14735911
	28	35	T-TR 35/28/35-L	14740111
	28	28	T-TR 35/28/28-L	14740211
	22	35	T-TR 35/22/35-L	14740311
42	15	35	T-TR 35/15/35-L	14740411
	12	35	T-TR 35/12/35-L	14740511
	6	35	T-TR 35/ 6/35-L	14740611
42	22	42	T-TR 42/22/42-L	14745111
	6	42	T-TR 42/ 6/42-L	14745211

## Istruzione di montaggio

1. Oleare i filetti d'estremità e le 2 O-ring.
2. Infilare la vite inferiore nel corpo del raccordo ed avvitare a mano.
3. Orientare il lato collegamento tubo e serrare la vite con la coppia di serraggio prescritto (vedere generalità, controbilanciando il corpo del raccordo)
4. Montare il tubo, controbilanciando il corpo del raccordo.
5. Mettere il tappo e serrare con la coppia prescritta (mass. \_ giro).
6. Si può smontare e rimontare il raccordo senza limitazioni.  
Verificare lo stato degli anelli torici e sostituire se necessario.

Attenzione : Un montaggio non conforme (lubrificazione o danneggiamento dell'O-ring superiore) riduce la pressione nominale e la durata della guarnizione con rischio di perdite.

## Assembly instructions

1. Oil the threads and the 2 O-ring.
2. Insert the bolt into the banjo and tighten by hand.
3. Set the tube connection to the desired direction and tighten the bolt with the recommended tightening torque (see Technical notes) holding the banjo firmly by means of a spanner.
4. Fix the tube holding the banjo firmly by means of a spanner.
5. Set the blanking plug and tighten with the recommended tightening torque (max. \_ of turn) holding the body of the coupling firmly by means of a spanner.
6. Repeated reassembly is possible. Check seals for possible damage and replace if necessary.

Attention : Different assembly (lubrication or damaging of the O-rings) reduces the nominal pressure rating and the life of the coupling, causing leakages.