

Raccordi intermedii diritti di riduzione

Serie leggera

Straight reducing couplings

Light range

Gerade Reduzierschraubungen

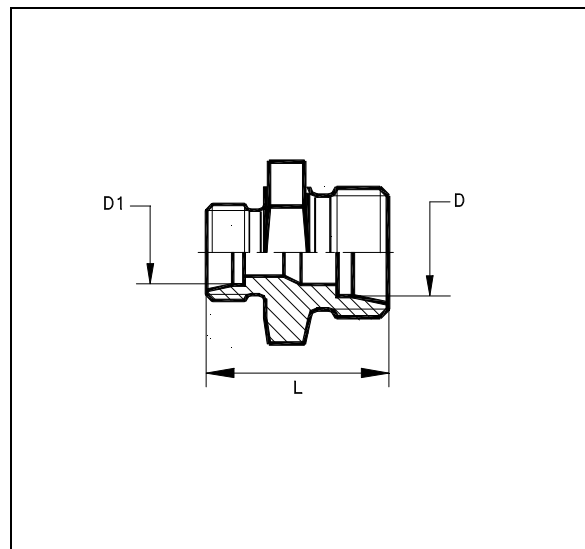
Leichte Baureihe

Unions doubles de réduction

Série légère

Uniones dobles de reducción

Serie ligera



D	D1	L		TAA
8	6	25	T-GR 8/6-L	14105111
10	8	26	T-GR 10/8-L	14110111
	6	26	T-GR 10/6-L	14110211
12	10	27	T-GR 12/10-L	14115111
	8	27	T-GR 12/8-L	14115211
	6	26	T-GR 12/6-L	14115311
15	12	29	T-GR 15/12-L	14120111
	10	29	T-GR 15/10-L	14120211
	8	28	T-GR 15/8-L	14120411
	6	28	T-GR 15/6-L	12120311
16	12	30	T-GR 16/12-L	14166111
	10	29	T-GR 16/10-L	14166211
	6	28	T-GR 16/6-L	14166311
18	15	31	T-GR 18/15-L	14125111
	12	31	T-GR 18/12-L	14125211
	10	31	T-GR 18/10-L	14125311
	8	30	T-GR 18/8-L	14125411
22	18	35	T-GR 22/18-L	14130111
	15	35	T-GR 22/15-L	14130211
	12	35	T-GR 22/12-L	14130311
	6	35	T-GR 22/6-L	14130411
28	22	36	T-GR 28/22-L	14135111
	18	36	T-GR 28/18-L	14135211
	15	36	T-GR 28/15-L	14135311
	12	35	T-GR 28/12-L	14135411
	10	35	T-GR 28/10-L	14135511
35	28	41	T-GR 35/28-L	14140111
	22	41	T-GR 35/22-L	14140211
	15	41	T-GR 35/15-L	14140311
42	35	44	T-GR 42/35-L	14145311
	28	43	T-GR 42/28-L	14145111
	15	43	T-GR 42/15-L	14145211
	6	42	T-GR 42/6-L	14145911

Raccordi intermedi diritti di riduzione

Serie pesante

Straight reducing couplings

Heavy range

Gerade Reduzierschraubungen

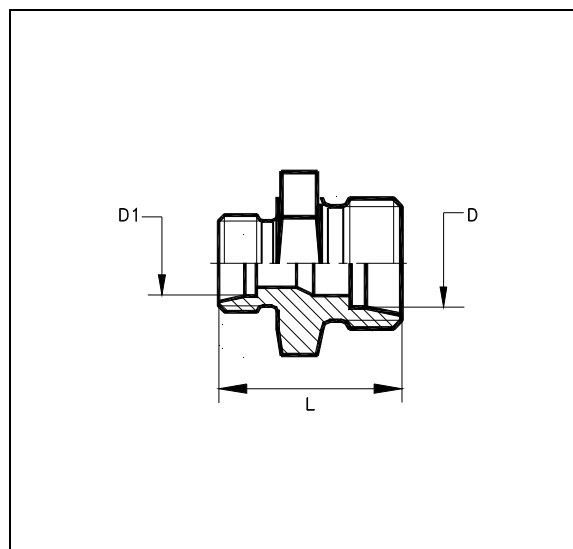
Schwere Baureihe

Unions doubles de réduction

Série lourde

Uniones dobles de reducción

Serie pesada



D	D1	L		TAA
8	6	31	T-GR 8/6-S	14155111
10	8	32	T-GR 10/8-S	14160111
	6	32	T-GR 10/6-S	14160211
12	10	34	T-GR 12/10-S	14165111
	8	33	T-GR 12/8-S	14165211
	6	32	T-GR 12/6-S	14165311
14	12	34	T-GR 14/12-S	14170111
	10	34	T-GR 14/10-S	14170211
16	14	38	T-GR 16/14-S	14175111
	12	36	T-GR 16/12-S	14175211
	10	35	T-GR 16/10-S	14175311
	6	35	T-GR 16/6-S	14175411
20	16	40	T-GR 20/16-S	14180111
	14	40	T-GR 20/14-S	14180211
	12	38	T-GR 20/12-S	14180311
	10	37	T-GR 20/10-S	14180411
	6	33	T-GR 20/6-S	14180511
25	20	47	T-GR 25/20-S	14185111
	16	45	T-GR 25/16-S	14185211
	12	43	T-GR 25/12-S	14185311
	10	42	T-GR 25/10-S	14185411
30	25	52	T-GR 30/25-S	14190111
	20	49	T-GR 30/20-S	14190211
	16	47	T-GR 30/16-S	14190311
	12	45	T-GR 30/12-S	14190411
38	30	57	T-GR 38/30-S	14195111
	25	54	T-GR 38/25-S	14195211
	20	52	T-GR 38/20-S	14195311
	10	48	T-GR 38/10-S	14195411

Istruzione di montaggio

1. Oleare i filetti d'estremità e le 2 O-ring.
2. Infilare la vite inferiore nel corpo del raccordo ed avvitare a mano.
3. Orientare il lato collegamento tubo e serrare la vite con la coppia di serraggio prescritto (vedere generalità, controbilanciando il corpo del raccordo)
4. Montare il tubo, controbilanciando il corpo del raccordo.
5. Mettere il tappo e serrare con la coppia prescritta (mass. _ giro).
6. Si può smontare e rimontare il raccordo senza limitazioni.
Verificare lo stato degli anelli torici e sostituire se necessario.

Attenzione : Un montaggio non conforme (lubrificazione o danneggiamento dell'O-ring superiore) riduce la pressione nominale e la durata della guarnizione con rischio di perdite.

Assembly instructions

1. Oil the threads and the 2 O-ring.
2. Insert the bolt into the banjo and tighten by hand.
3. Set the tube connection to the desired direction and tighten the bolt with the recommended tightening torque (see Technical notes) holding the banjo firmly by means of a spanner.
4. Fix the tube holding the banjo firmly by means of a spanner.
5. Set the blanking plug and tighten with the recommended tightening torque (max. _ of turn) holding the body of the coupling firmly by means of a spanner.
6. Repeated reassembly is possible. Check seals for possible damage and replace if necessary.

Attention : Different assembly (lubrication or damaging of the O-rings) reduces the nominal pressure rating and the life of the coupling, causing leakages.