

Raccordi d'estremità a gomito

Serie leggera
Filettatura: gas conica

Stud elbows

Light range
Stud thread: B.S.P. taper

Winkel-Einschraubverschraubungen

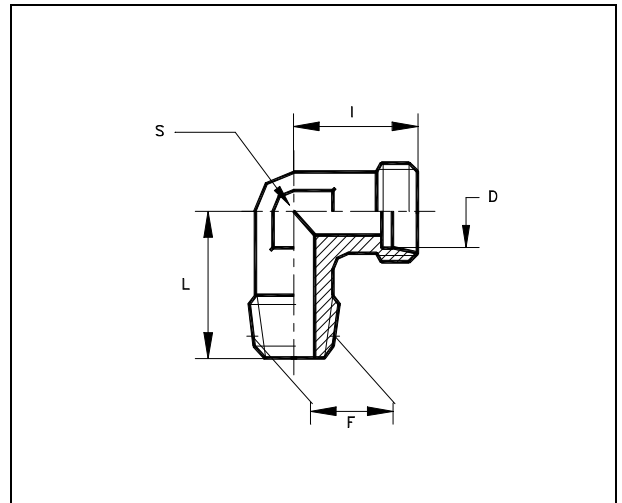
Leichte Baureihe
Einschraubgewinde: whitworth kegelig

Coudes mâles

Série légère
Filetage : Whitworth conique

Racores en codo

Serie ligera
Rosca: gas cónica



Serie	Ø Tubo D	S	I	L	F		TAA
LL	4	7	15	17	R 1/8"	T-WE 4-LLR 1/8"keg	11000011
	6	9	15	17	R 1/8"	T-WE 6-LLR 1/8"keg	11010011
	8	12	17	20	R 1/8"	T-WE 8-LLR 1/8"keg	11015011
L	6	12	19	20	R 1/8"	T-WE 6-LR 1/8"keg	11100011
		12	19	26	R 1/4"	T-WE 6-LR 1/4"keg	11100111
	8	12	21	22	R 1/8"	T-WE 8-LR 1/8"keg	11105111
		12	21	22	R 1/4"	T-WE 8-LR 1/4"keg	11105011
		17	21	28	R 3/8"	T-WE 8-LR 3/8"keg	11105211
	10	14	22	27	R 1/4"	T-WE 10-LR 1/4"keg	11110011
		17	22	28	R 3/8"	T-WE 10-LR 3/8"keg	11110111
	12	17	24	24	R 1/4"	T-WE 12-LR 1/4"keg	11115111
		17	24	28	R 3/8"	T-WE 12-LR 3/8"keg	11115011
		19	24	34	R 1/2"	T-WE 12-LR 1/2"keg	11115211
	14	19	24	34	R 1/2"	T-WE 14-LR 1/2"keg	11116011
	15	19	28	28	R 3/8"	T-WE 15-LR 3/8"keg	11120111
		19	28	34	R 1/2"	T-WE 15-LR 1/2"keg	11120011
16	19	28	34	R 1/2"	T-WE 16-LR 1/2"keg	11166011	
18	24	31	36	R 1/2"	T-WE 18-LR 1/2"keg	11125011	
22	27	35	42	R 3/4"	T-WE 22-LR 3/4"keg	11130511	
28	36	38	48	R 1"	T-WE 28-LR 1"keg	11135511	
35	41	45	54	R 1"1/4	T-WE 35-LR 1"1/4keg	11140511	
42	50	57	61	R 1"1/2	T-WE 42-LR 1"1/2keg	11145511	

Raccordi d'estremità a gomito

Serie pesante
Filettatura: gas conica

Stud elbows

Heavy range
Stud thread: B.S.P. taper

Winkel-Einschraubverschraubungen

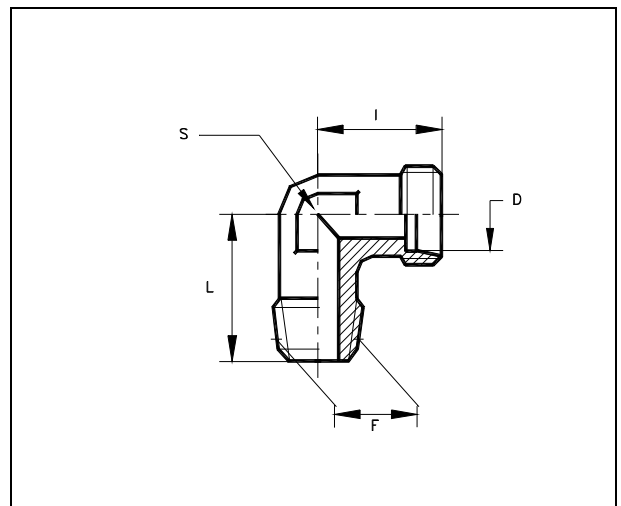
Schwere Baureihe
Einschraubgewinde: whitworth kegelig

Coudes mâles

Série lourde
Filetage : Whitworth conique

Racores en codo

Serie pesada
Rosca: gas cónica



Serie	Ø Tubo D	S	I	L	F		TAA
S	6	12	23	26	R 1/4"	T-WE 6-SR 1/4"keg	11150011
	8	14	24	27	R 1/4"	T-WE 8-SR 1/4"keg	11155011
	10	17	25	28	R 3/8"	T-WE 10-SR 3/8"keg	11160011
	12	19	29	28	R 3/8"	T-WE 12-SR 3/8"keg	11165011
	14	19	30	32	R 1/2"	T-WE 14-SR 1/2"keg	11170011
	16	24	33	32	R 1/2"	T-WE 16-SR 1/2"keg	11175011
	20	27	37	42	R 3/4"	T-WE 20-SR 3/4"keg	11180511
	25	36	42	48	R 1"	T-WE 25-SR 1"keg	11185511
	30	41	49	54	R 1"1/4	T-WE 30-SR 1"1/4keg	11190511
	38	50	57	61	R 1"1/2	T-WE 38-SR 1"1/2keg	11195511

Raccordi d'estremità a gomito

Serie leggera
Filettatura: NPT (ANSI/ASME B1-20.1.83)

Stud elbows

Light range
Stud thread: NPT (ANSI/ASME B1-20.1.83)

Winkel-Einschraubverschraubungen

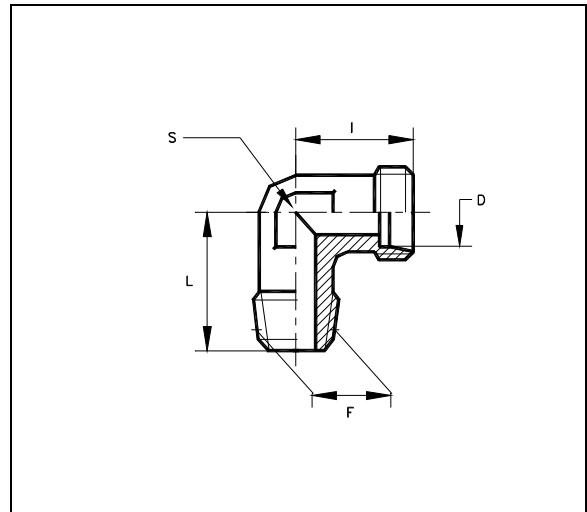
Leichte Baureihe
Einschraubgewinde: NPT (ANSI/ASME B1-20.1.83)

Coudes mâles

Série légère
Filetage: NPT (ANSI/ASME B1-20.1.83)

Racores en codo

Serie ligera
Rosca: NPT (ANSI/ASME B1-20.1.83)



Serie	Ø Tubo D	S	I	L	F		TAA
LL	4	7	15	17	1/8" NPT	T-WE 4-LLM 1/8" NPT	11400011
	6	9	15	17	1/8" NPT	T-WE 6-LLM 1/8" NPT	11410011
	8	12	17	20	1/8" NPT	T-WE 8-LLM 1/8" NPT	11415011
L	6	12	19	20	1/8" NPT	T-WE 6-LM 1/8" NPT	11500011
		12	19	26	1/4" NPT	T-WE 6-LM 1/4" NPT	11500111
	8	12	21	26	1/4" NPT	T-WE 8-LM 1/4" NPT	11505011
		14	21	28	3/8" NPT	T-WE 8-LM 3/8" NPT	11505111
	10	14	22	27	1/4" NPT	T-WE 10-LM 1/4" NPT	11510011
		17	24	28	3/8" NPT	T-WE 10-LM 3/8" NPT	11510111
		19	24	34	1/2" NPT	T-WE 10-LM 1/2" NPT	11510311
	12	17	24	26	1/8" NPT	T-WE 12-LM 1/8" NPT	11515311
		17	24	26	1/4" NPT	T-WE 12-LM 1/4" NPT	11515111
		17	24	28	3/8" NPT	T-WE 12-LM 3/8" NPT	11515011
		19	26	34	1/2" NPT	T-WE 12-LM 1/2" NPT	11515211
	14	19	28	34	1/2" NPT	T-WE 14-LM 1/2" NPT	11516011
	15	19	28	34	3/8" NPT	T-WE 15-LM 3/8" NPT	11520111
		19	28	34	1/2" NPT	T-WE 15-LM 1/2" NPT	11520011
	16	19	28	34	1/2" NPT	T-WE 16-LM 1/2" NPT	11566011
18	24	31	36	1/2" NPT	T-WE 18-LM 1/2" NPT	11525011	
22	27	35	42	3/4" NPT	T-WE 22-LM 3/4" NPT	11530011	
28	36	38	48	1" NPT	T-WE 28-LM 1" NPT	11535011	
35	41	45	54	1"1/4 NPT	T-WE 35-LM 1"1/4 NPT	11540011	
42	50	51	61	1"1/2 NPT	T-WE 42-LM 1"1/2 NPT	11545011	

Raccordi d'estremità a gomito

Serie pesante
Filettatura: NPT (ANSI/ASME B1-20.1.83)

Stud elbows

Heavy range
Stud thread: NPT (ANSI/ASME B1-20.1.83)

Winkel-Einschraubverschraubungen

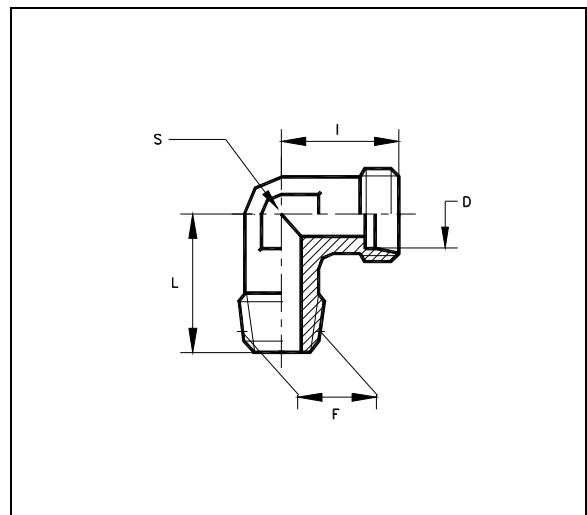
Schwere Baureihe
Einschraubgewinde: NPT (ANSI/ASME B1-20.1.83)

Coudes mâles

Série lourde
Filetage: NPT (ANSI/ASME B1-20.1.83)

Racores en codo

Serie pesada
Rosca: NPT (ANSI/ASME B1-20.1.83)



Serie	Ø Tubo D	S	I	L	F		TAA
S	6	12	23	26	1/4" NPT	T-WE 6-S 1/4" NPT	11550011
	8	14	24	27	1/4" NPT	T-WE 8-S 1/4" NPT	11555011
	10	17	25	28	3/8" NPT	T-WE 10-S 3/8" NPT	11560011
	12	19 19	29 29	28 34	3/8" NPT 1/2" NPT	T-WE 12-S 3/8" NPT T-WE 12-S 1/2" NPT	11565011 11565111
	14	19	30	32	1/2" NPT	T-WE 14-S 1/2" NPT	11570011
	16	24	33	32	1/2" NPT	T-WE 16-S 1/2" NPT	11575011
	20	27	37	42	3/4" NPT	T-WE 20-S 3/4" NPT	11580011
	25	36	42	48	1" NPT	T-WE 25-S 1" NPT	11585011
	30	41	49	54	1"1/4 NPT	T-WE 30-S 1"1/4 NPT	11590011
	38	50	57	61	1"1/2 NPT	T-WE 38-S 1"1/2 NPT	11595011

Raccordi d'estremità a gomito

Serie leggera
Filettatura: metrica conica

Stud elbows

Light range
Stud thread: metric taper

Winkel-Einschraubverschraubungen

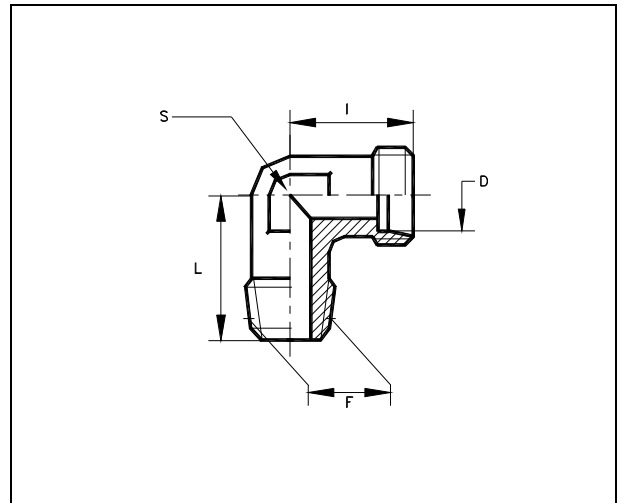
Leichte Baureihe
Einschraubgewinde: metrisch-fein kegelig

Coudes mâles

Série légère
Filetage : métrique conique

Racores en codo

Serie ligera
Rosca: métrica cónica



Serie	Ø Tubo D	S	I	L	F		TAA
LL	4	7	15	17	M8x1	T-WE 4-LLM 8x1 keg	11200011
	6	9	15	17	M10x1	T-WE 6-LLM 10x1 keg	11210011
	8	12	17	20	M10x1	T-WE 8-LLM 10x1 keg	11215011
L	6	12	19	20	M10X1	T-WE 6-LM 10X1 keg	11300011
	8	12	21	22	M12x1.5	T-WE 8-LM 12x1.5 keg	11305011
	10	14	22	27	M14x1.5	T-WE 10-LM 14x1.5 keg	11310011
		17	22	27	M16x1.5	T-WE 10-LM 16x1.5 keg	11310211
		17	22	28	M18x1.5	T-WE 10-LM 18x1.5 keg	11310111
	12	17	24	28	M16x1.5	T-WE 12-LM 16x1.5 keg	11315011
	14	19	24	34	M18x1.5	T-WE 14-LM 18x1.5 keg	11316011
	15	19	28	34	M18x1.5	T-WE 15-LM 18x1.5 keg	11320011
		19	28	34	M20x1.5	T-WE 15-LM 20x1.5 keg	11320111
	16	19	28	34	M18x1.5	T-WE 16-LM 18x1.5 keg	11366011
	18	24	31	36	M22x1.5	T-WE 18-LM 22x1.5 keg	11325011
	22	27	35	42	M26x1.5	T-WE 22-LM 26x1.5 keg	11330511
28	36	38	48	M33x2	T-WE 28-LM 33x2 keg	11335511	
35	41	45	54	M42x2	T-WE 35-LM 42x2 keg	11340511	
42	50	51	61	M48x2	T-WE 42-LM 48x2 keg	11345511	

Raccordi d'estremità a gomito

Serie pesante
Filettatura: metrica conica

Stud elbows

Heavy range
Stud thread: metric taper

Winkel-Einschraubverschraubungen

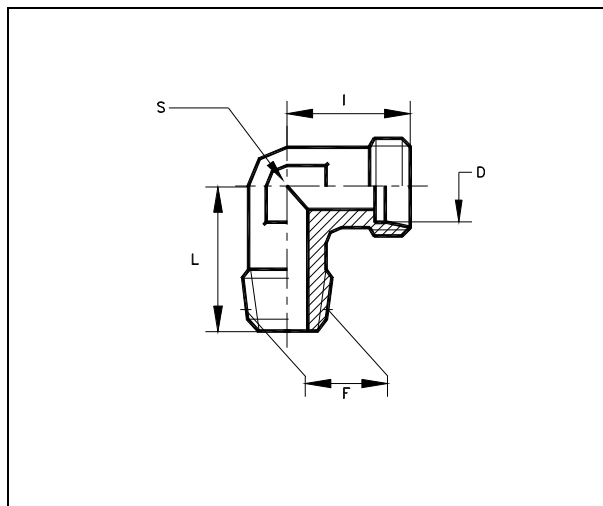
Schwere Baureihe
Einschraubgewinde: metrisch-fein kegelig

Coudes mâles

Série lourde
Filetage : métrique conique

Racores en codo

Serie pesada
Rosca: métrica cónica



Serie	Ø Tubo D	S	I	L	F		TAA
S	6	12	23	26	M12x1.5	T-WE 6-SM 12x1.5 keg	11350011
	8	14	24	27	M14x1.5	T-WE 8-SM 14x1.5 keg	11355011
	10	17	25	28	M16x1.5	T-WE 10-SM 16x1.5 keg	11360011
	12	19	29	28	M18x1.5	T-WE 12-SM 18x1.5 keg	11365011
	14	19	30	32	M20x1.5	T-WE 14-SM 20x1.5 keg	11370011
	16	24	33	32	M22x1.5	T-WE 16-SM 22x1.5 keg	11375011
	20	27	37	42	M27x2	T-WE 20-SM 27x2 keg	11380511
	25	36	42	48	M33x2	T-WE 25-SM 33x2 keg	11385511
	30	41	49	54	M42x2	T-WE 30-SM 42x2 keg	11390511
	38	50	57	61	M48x2	T-WE 38-SM 48x2 keg	11395511

Istruzione di montaggio

1. Oleare i filetti d'estremità e le 2 O-ring.
2. Infilare la vite inferiore nel corpo del raccordo ed avvitare a mano.
3. Orientare il lato collegamento tubo e serrare la vite con la coppia di serraggio prescritto (vedere generalità, controbilanciando il corpo del raccordo)
4. Montare il tubo, controbilanciando il corpo del raccordo.
5. Mettere il tappo e serrare con la coppia prescritta (mass. _ giro).
6. Si può smontare e rimontare il raccordo senza limitazioni.
Verificare lo stato degli anelli torici e sostituire se necessario.

Attenzione : Un montaggio non conforme (lubrificazione o danneggiamento dell'O-ring superiore) riduce la pressione nominale e la durata della guarnizione con rischio di perdite.

Assembly instructions

1. Oil the threads and the 2 O-ring.
2. Insert the bolt into the banjo and tighten by hand.
3. Set the tube connection to the desired direction and tighten the bolt with the recommended tightening torque (see Technical notes) holding the banjo firmly by means of a spanner.
4. Fix the tube holding the banjo firmly by means of a spanner.
5. Set the blanking plug and tighten with the recommended tightening torque (max. _ of turn) holding the body of the coupling firmly by means of a spanner.
6. Repeated reassembly is possible. Check seals for possible damage and replace if necessary.

Attention : Different assembly (lubrication or damaging of the O-rings) reduces the nominal pressure rating and the life of the coupling, causing leakages.