

Raccordi d'estremità dritti

Serie leggera
 Filettatura: gas cilindrica
 Tenuta a forma D-DIN, anello di tenuta metallico

Male stud couplings

Light range
 Stud thread: B.S.P. parallel
 Stud sealing form D-DIN 3852, washer

Gerade Einschraubverschraubungen

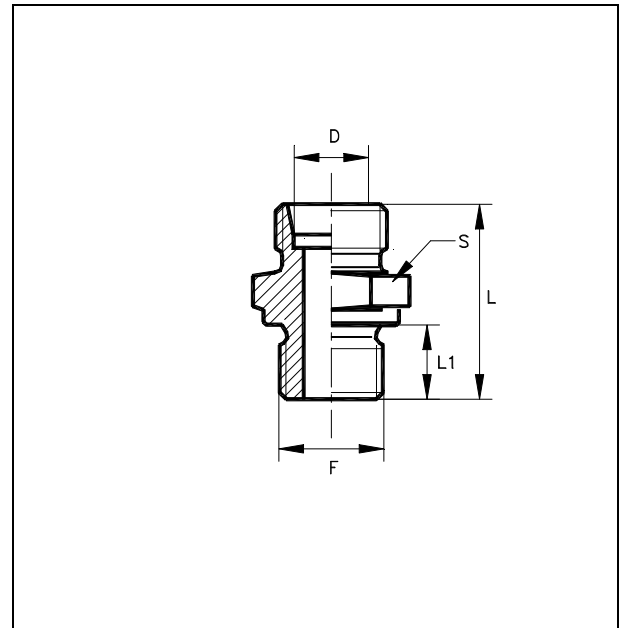
Leichte Baureihe
 Einschraubgewinde: Whitworth zylindrisch
 Abdichtart form D-DIN 3852, mit Dichtring

Unions simple mâles

Série légère
 Filetage: Whitworth cylindrique
 Arête d'étanchéité forme D-DIN, joint métallique

Racores rectos

Serie ligera
 Rosca: gas cilindrca
 Estanquiedad forma D-DIN, junta metálica



Ø Tubo D	S	L	L1	F		TAA
6	14	24	8	R 1/8"	T-GE 6-LR 1/8" A	20600011
	19	26	12	R 1/4"	T-GE 6-LR 1/4" A	20600211
	22	26	12	R 3/8"	T-GE 6-LR 3/8" A	20600411
8	19	30	12	R 1/4"	T-GE 8-LR 1/4" A	20605011
	22	30	12	R 3/8"	T-GE 8-LR 3/8" A	20605211
	27	30	12	R 1/2"	T-GE 8-LR 1/2" A	20605411
10	17	27	8	R 1/8"	T-GE 10-LR 1/8" A	20610011
	19	31	12	R 1/4"	T-GE 10-LR 1/4" A	20610211
	22	31	12	R 3/8"	T-GE 10-LR 3/8" A	20610411
	27	31	12	R 1/2"	T-GE 10-LR 1/2" A	20610611
12	19	32	12	R 1/4"	T-GE 12-LR 1/4" A	20615011
	22	32	12	R 3/8"	T-GE 12-LR 3/8" A	20615211
	27	32	12	R 1/2"	T-GE 12-LR 1/2" A	20615411
14	22	33	12	R 3/8"	T-GE 14-LR 3/8" A	20619011
	37	33	12	R 1/2"	T-GE 14-LR 1/2" A	20619211
	32	35	14	R 3/4"	T-GE 14-LR 3/4" A	20619411

Raccordi d'estremità diritti

Serie leggera
 Filettatura: gas cilindrica
 Tenuta a forma D-DIN, anello di tenuta metallico

Male stud couplings

Light range
 Stud thread: B.S.P. parallel
 Stud sealing form D-DIN 3852, washer

Gerade Einschraubverschraubungen

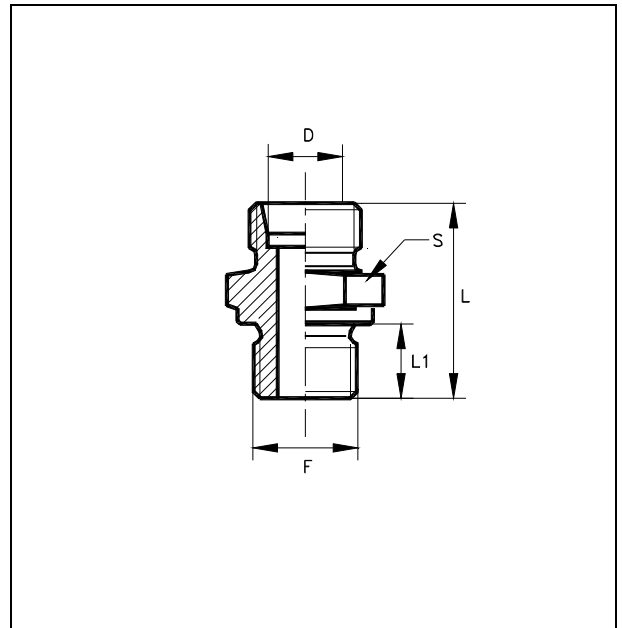
Leichte Baureihe
 Einschraubgewinde: Whitworth zylindrisch
 Abdichtart Form D-DIN 3852, mit Dichtring

Unions simple mâles

Série légère
 Filetage : Whitworth cylindrique
 Arête d'étanchéité forme D-DIN, joint métallique

Racores rectos

Serie ligera
 Rosca: gas cilíndrica
 Estanquedad forma D-DIN, junta metálica



Ø Tubo D	S	L	L1	F		TAA
15	22	34	12	R 3/8"	T-GE 15-LR 3/8" A	20620011
	27	34	12	R 1/2"	T-GE 15-LR 1/2" A	20620211
	32	36	14	R 3/4"	T-GE 15-LR 3/4" A	20620411
16	27	34	12	R 1/2"	T-GE 16-LR 1/2" A	20666011
18	27	37	12	R 3/8"	T-GE 18-LR 3/8" A	20625011
	27	37	12	R 1/2"	T-GE 18-LR 1/2" A	20625211
	32	39	16	R 3/4"	T-GE 18-LR 3/4" A	20625411
22	32	39	12	R 1/2"	T-GE 22-LR 1/2" A	20630011
	32	40	16	R 3/4"	T-GE 22-LR 3/4" A	20630211
28	41	41	16	R 3/4"	T-GE 28-LR 3/4" A	20635011
	41	43	18	R 1"	T-GE 28-LR 1" A	20635211
35	50	46	18	R 1"	T-GE 35-LR 1" A	20640011
	50	48	20	R 1"1/4	T-GE 35-LR 1"1/4 A	20640211
42	50	51	20	R 1"1/4	T-GE 42-LR 1"1/4 A	20645011
	55	53	22	R 1"1/2	T-GE 42-LR 1"1/2 A	20645211

Raccordi d'estremità dritti

Serie pesante
 Filettatura: gas cilindrica
 Tenuta a forma D-DIN, anello di tenuta metallico

Male stud couplings

Heavy range
 Stud thread: B.S.P. parallel
 Stud sealing form D-DIN 3852, washer

Gerade Einschraubverschraubungen

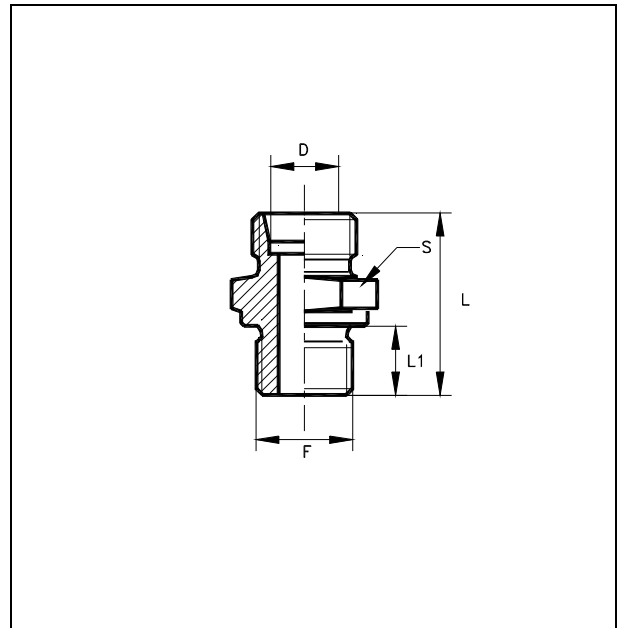
Schwere Baureihe
 Einschraubgewinde: Whitworth zylindrisch
 Abdichtart form D-DIN 3852 mit Dichtring

Unions simple mâles

Série lourde
 Filetage : Whitworth cylindrique
 Arête d'étanchéité forme D-DIN, joint métallique

Racores rectos

Serie pesada
 Rosca: gas cilíndrica
 Estanquedad forma D-DIN, junta metálica



Ø Tubo D	S	L	L1	F		TAA
6	14	25.5	8	R 1/8"	T-GE 6-SR 1/8"A	20650311
	19	32	12	R 1/4"	T-GE 6-SR 1/4"A	20650011
	22	32	12	R 3/8"	T-GE 6-SR 3/8"A	20650211
	27	35	14	R 1/2"	T-GE 6-SR 1/2"A	20650411
8	17	25.5	8	R 1/8"	T-GE 8-SR 1/8"A	20655311
	19	34	12	R 1/4"	T-GE 8-SR 1/4"A	20655011
	22	32.5	12	R 3/8"	T-GE 8-SR 3/8"A	20655211
10	19	31	12	R 1/4"	T-GE 10-SR 1/4"A	20660211
	22	34	12	R 3/8"	T-GE 10-SR 3/8"A	20660011
	27	35	14	R 1/2"	T-GE 10-SR 1/2"A	20660411
12	22	36	12	R 3/8"	T-GE 12-SR 3/8"A	20665011
	27	39	14	R 1/2"	T-GE 12-SR 1/2"A	20665211
14	22	35	12	R 3/8"	T-GE 14-SR 3/8"A	20670211
	27	41	14	R 1/2"	T-GE 14-SR 1/2"A	20670011

Raccordi d'estremità diritti

Serie pesante
 Filettatura: gas cilindrica
 Tenuta a forma D-DIN, anello di tenuta metallico

Male stud couplings

Heavy range
 Stud thread: B.S.P. parallel
 Stud sealing form D-DIN 3852, washer

Gerade Einschraubverschraubungen

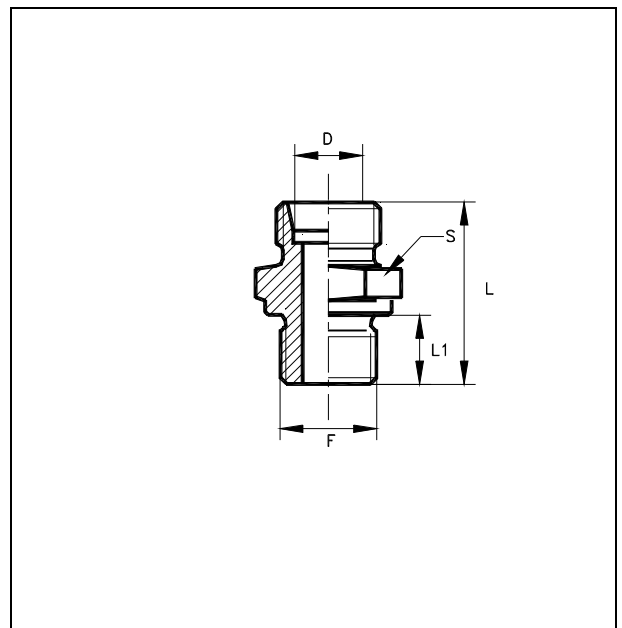
Schwere Baureihe
 Einschraubgewinde: Whitworth zylindrisch
 Abdichtart form D-DIN 3852, mit Dichtring

Unions simple mâles

Série lourde
 Filetage : Whitworth cylindrique
 Arête d'étanchéité forme D-DIN, joint métallique

Racores rectos

Serie pesada
 Rosca: gas cilíndrica
 Estanquedad forma D-DIN, junta metálica



Ø Tubo D	S	L	L1	F		TAA
16	27	34	12	R 3/8"	T-GE 16-SR 3/8" A	20675211
	27	41	14	R 1/2"	T-GE 16-SR 1/2" A	20675011
20	32	40	14	R 1/2"	T-GE 20-SR 1/2" A	20680211
	32	47	16	R 3/4"	T-GE 20-SR 3/4" A	20680011
	41	49	18	R 1"	T-GE 20-SR 1" A	20680411
25	36	51	16	R 3/4"	T-GE 25-SR 3/4" A	20685211
	41	53	18	R 1"	T-GE 25-SR 1" A	20685011
30	46	54	18	R 1"	T-GE 30-SR 1" A	20690211
	50	57	20	R 1"1/4	T-GE 30-SR 1"1/4 A	20690011
38	55	61	20	R 1"1/4	T-GE 38-SR 1"1/4 A	20695211
	55	63	22	R 1"1/2	T-GE 38-SR 1"1/2 A	20695011

Raccordi d'estremità diritti

Serie leggera
 Filettatura: metrica cilindrica
 Tenuta a forma D-DIN, anello di tenuta metallico

Male stud couplings

Light range
 Stud thread: metric parallel
 Stud sealing form D-DIN 3852, washer

Gerade Einschraubverschraubungen

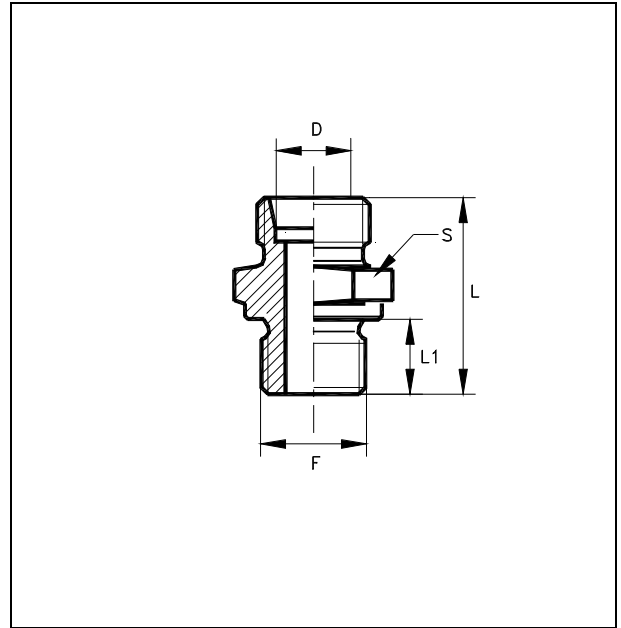
Leichte Baureihe
 Einschraubgewinde: metrsch-fein zylindrisch
 Abdichtart Form D-DIN 3852 mit Dichtring

Unions simple mâles

Série légère
 Filetage : métrique cylindrique
 Arête d'étanchéité forme D-DIN 3852, joint métallique

Racores rectos

Serie ligera
 Rosca: métrica cilíndrica
 Estanquiedad forma D-DIN 3852, junta metálica



Ø Tubo D	S	L	L1	F		TAA
6	14	23.5	8	M10x1	T-GE 6-LM 10x1 A	20700011
	14	24	9	M10x1.25	T-GE 6-LM 10x1.25 A	20700111
	17	26	10	M12x1	T-GE 6-LM 12x1 A	20700211
	17	29	12	M12x1.25	T-GE 6-LM 12x1.25 A	20700311
	17	27	11	M12x1.5	T-GE 6-LM 12x1.5 A	20700411
	19	28	10	M14x1.5	T-GE 6-LM 14x1.5 A	20700511
	22	28	12	M16x1.5	T-GE 6-LM 16x1.5 A	20700611
	24	28	12	M18x1.5	T-GE 6-LM 18x1.5 A	20700711
	27	30	12	M20x1.5	T-GE 6-LM 20x1.5 A	20700811
	27	28	12	M22x1.5	T-GE 6-LM 22x1.5 A	20700911
8	14	26	10	M10x1	T-GE 8-LM 10x1 A	20705011
	14	24	8	M10x1.25	T-GE 8-LM 10x1.25 A	20705111
	17	25	10	M12x1	T-GE 8-LM 12x1 A	20705211
	17	25	10	M12x1.25	T-GE 8-LM 12x1.25 A	20705311
	17	29	12	M12x1.5	T-GE 8-LM 12x1.5 A	20705411
	19	28	11	M14x1.5	T-GE 8-LM 14x1.5 A	20705511
	22	28	12	M16x1.5	T-GE 8-LM 16x1.5 A	20705611
	24	26	11	M18x1.5	T-GE 8-LM 18x1.5 A	20705711
	27	28	12	M20x1.5	T-GE 8-LM 20x1.5 A	20705811
	27	28	12	M22x1.5	T-GE 8-LM 22x1.5 A	20705911
	32	33	16	M26x1.5	T-GE 8-LM 26x1.5 A	20706011
	36	34	16	M30x1.5	T-GE 8-LM 30x1.5 A	20706111

Raccordi d'estremità diritti

Serie leggera
 Filettatura: metrica cilindrica
 Tenuta a forma D-DIN, anello di tenuta metallico

Male stud couplings

Light range
 Stud thread: metric parallel
 Stud sealing form D-DIN 3852, washer

Gerade Einschraubverschraubungen

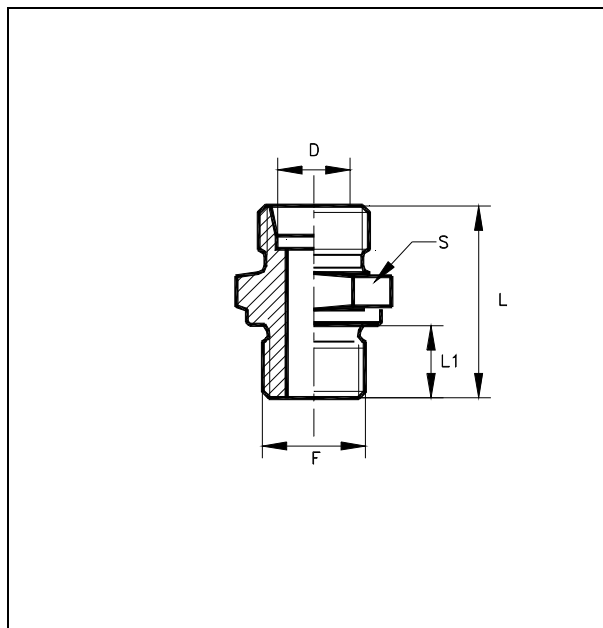
Leichte Baureihe
 Einschraubgewinde: metrisch-fein zylindrisch
 Abdichtart form D-DIN 3852 mit Dichtring

Unions simple mâles

Série légère
 Filetage : métrique cylindrique
 Arête d'étanchéité forme D-DIN, joint métallique

Racores rectos

Serie ligera
 Rosca: métrica cilíndrica
 Estanquedad forma D-DIN, junta metálica



Ø Tubo D	S	L	L1	F		TAA
10	17	26	9	M10x1	T-GE 10-LM 10x1 A	20710911
	17	29	12	M12x1.5	T-GE 10-LM 12x1.5 A	20710011
	19	30	12	M14x1.5	T-GE 10-LM 14x1.5 A	20710211
	22	30	13	M16x1.5	T-GE 10-LM 16x1.5 A	20710311
	24	29	12	M18x1.5	T-GE 10-LM 18x1.5 A	20710411
	27	30	13	M20x1.5	T-GE 10-LM 20x1.5 A	20710511
	27	29	12	M22x1.5	T-GE 10-LM 22x1.5 A	20710611
	32	27	16	M26x1.5	T-GE 10-LM 26x1.5 A	20710711
	36	35	15	M30x1.5	T-GE 10-LM 30x1.5 A	20710811
	12	19	26	10	M12x1.25	T-GE 12-LM 12x1.25A
19		30	14	M12x1.5	T-GE 12-LM 12x1.5 A	20715011
19		31.5	12	M14x1.5	T-GE 12-LM 14x1.5 A	20715111
22		29	14	M16x1.5	T-GE 12-LM 16x1.5 A	20715211
24		31	12	M18x1.5	T-GE 12-LM 18x1.5 A	20715311
27		37	14	M20x1.5	T-GE 12-LM 20x1.5 A	20715411
27		29	12	M22x1.5	T-GE 12-LM 22x1.5 A	20715511
32		30	12	M26x1.5	T-GE 12-LM 26x1.5 A	20715611
36		33	15	M30x1.5	T-GE 12-LM 30x1.5 A	20715711
36		35	16	M30x2	T-GE 12-LM 30x2 A	20715811

Raccordi d'estremità diritti

Serie leggera
 Filettatura: metrica cilindrica
 Tenuta a forma D-DIN, anello di tenuta metallico

Male stud couplings

Light range
 Stud thread: metric parallel
 Stud sealing form D-DIN 3852, washer

Gerade Einschraubverschraubungen

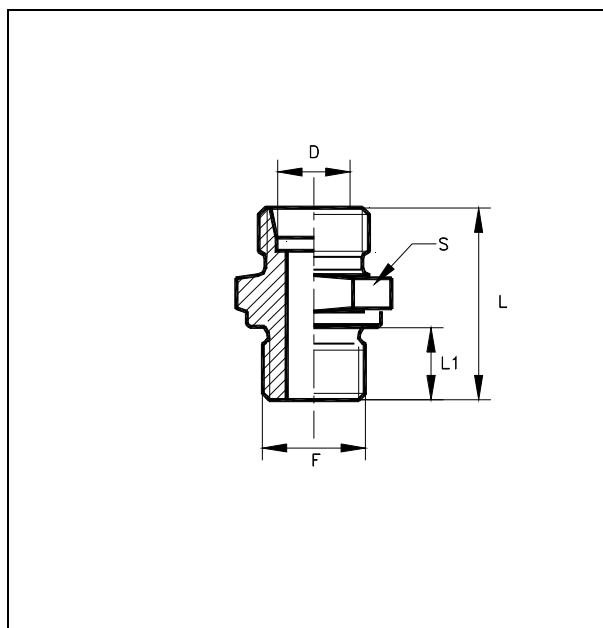
Leichte Baureihe
 Einschraubgewinde: metrsch-fein zylindrisch
 Abdichtart Form D-DIN 3852 mit Dichtring

Unions simple mâles

Série légère
 Filetage : métrique cylindrique
 Arête d'étanchéité forme D-DIN, joint métallique

Racores rectos

Serie ligera
 Rosca: métrica cilíndrica
 Estanquedad forma D-DIN, junta metálica



Ø Tubo D	S	L	L1	F		TAA
14	22	33	12	M12x1.5	T-GE 14-LM 12x1.5 A	20719011
	22	33	12	M14x1.5	T-GE 14-LM 14x1.5 A	20719111
	22	33	12	M16x1.5	T-GE 14-LM 16x1.5 A	20719211
	24	33	12	M18x1.5	T-GE 14-LM 18x1.5 A	20719311
	27	34	12	M20x1.5	T-GE 14-LM 20x1.5 A	20719411
	27	35	12	M22x1.5	T-GE 14-LM 22x1.5 A	20719511
	36	38	16	M30x1.5	T-GE 14-LM 30x1.5 A	20719611
15	22	34	12	M12x1.5	T-GE 15-LM 12x1.5 A	20720011
	22	34	12	M14x1.5	T-GE 15-LM 14x1.5 A	20720111
	24	32	12	M16x1.5	T-GE 15-LM 16x1.5 A	20720211
	24	32	12	M18x1.5	T-GE 15-LM 18x1.5 A	20720311
	27	31	13	M20x1.5	T-GE 15-LM 20x1.5 A	20720411
	27	33	13	M22x1.5	T-GE 15-LM 22x1.5 A	20720511
	32	36	16	M26x1.5	T-GE 15-LM 26x1.5 A	20720611
	36	31	11	M28x1.5	T-GE 15-LM 28x1.5 A	20720911
	36	39	16	M30x1.5	T-GE 15-LM 30x1.5 A	20720711
41	42	18	M33x2	T-GE 15-LM 33x2 A	20720811	
16	22	30	10	M12x1.5	T-GE 16-LM 12x1.5 A	20766711
	22	30	12	M16x1.5	T-GE 16-LM 16x1.5 A	20766011
	24	32.5	12	M18x1.5	T-GE 16-LM 18x1.5 A	20766111
	27	39	14	M20x1.5	T-GE 16-LM 20x1.5 A	20766211
	27	33	13	M22x1.5	T-GE 16-LM 22x1.5 A	20766311
	30	34	14	M24x1.5	T-GE 16-LM 24x1.5 A	20766611
	32	38	14	M26x1.5	T-GE 16-LM 26x1.5 A	20766411
	36	30	12	M28x1.5	T-GE 16-LM 28x1.5 A	20766811
	36	39	16	M30x1.5	T-GE 16-LM 30x1.5 A	20766511

Raccordi d'estremità dritti

Serie leggera
 Filettatura: metrica cilindrica
 Tenuta a forma D-DIN, anello di tenuta metallico

Male stud couplings

Light range
 Stud thread: metric parallel
 Stud sealing form D-DIN 3852, washer

Gerade Einschraubverschraubungen

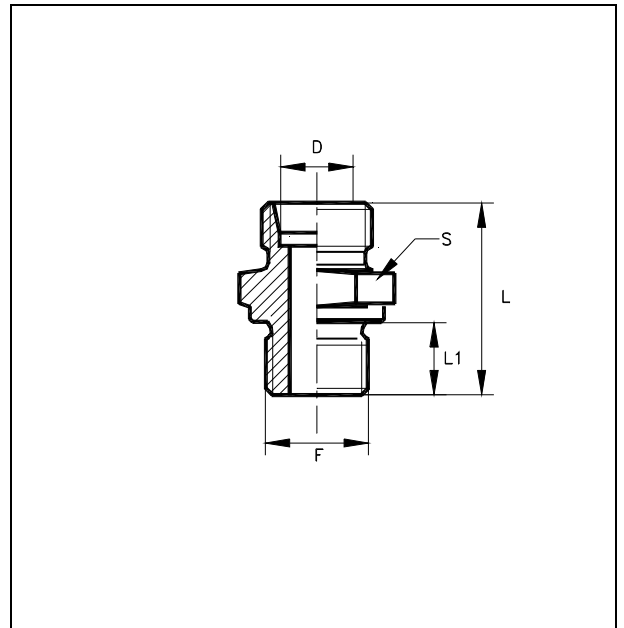
Leichte Baureihe
 Einschraubgewinde: metrsch-fein zylindrisch
 Abdichtart Form D-DIN 3852 mit Dichtring

Unions simple mâles

Série légère
 Filetage : métrique cylindrique
 Arête d'étanchéité forme D-DIN, joint métallique

Racores rectos

Serie ligera
 Rosca: métrica cilíndrica
 Estanquiedad forma D-DIN, junta metálica



Ø Tubo D	S	L	L1	F		TAA
18	27	32	12	M16x1.5	T-GE 18-L M16x1.5	20725811
	27	36	14	M22x1.5	T-GE 18-L M22x1.5	20725011
	30	36	14	M24x1.5	T-GE 18-L M24x1.5	20725711
	32	38	16	M26x1.5	T-GE 18-L M26x1.5	20725111
	32	39	16	M27x2	T-GE 18-L M27x2	20725311
	36	39	16	M28x1.5	T-GE 18-L M28x1.5	20725611
	36	39	16	M30x1.5	T-GE 18-L M30x1.5	20725211
22	30	38	14	M22x1.5	T-GE 22-L M22x1.5	20730011
	32	40	16	M25x1.5	T-GE 22-L M25x1.5	20730411
	32	40	16	M26x1.5	T-GE 22-L M26x1.5	20730111
	36	40	16	M30x1.5	T-GE 22-L M30x1.5	20730211
	41	42	18	M33x2	T-GE 22-L M33x2	20730311
28	36	41	15	M26x1.5	T-GE 28-L M26x1.5	20735311
	36	42	16	M30x1.5	T-GE 28-L M30x1.5	20735011
	41	43	18	M33x2	T-GE 28-L M33x2	20735111
35	50	48.2	20	M42x2	T-GE 35-L M42x2	20740011
	55	50.5	22	M48x2	T-GE 35-L M48x2	20740111
42	55	53	22	M48x2	T-GE 42-L M48x2	20745011

Raccordi d'estremità dritti

Serie pesante
 Filettatura: metrica cilindrica
 Tenuta a forma D-DIN, anello di tenuta metallico

Male stud couplings

Heavy range
 Stud thread: metric parallel
 Stud sealing form D-DIN 3852, washer

Gerade Einschraubverschraubungen

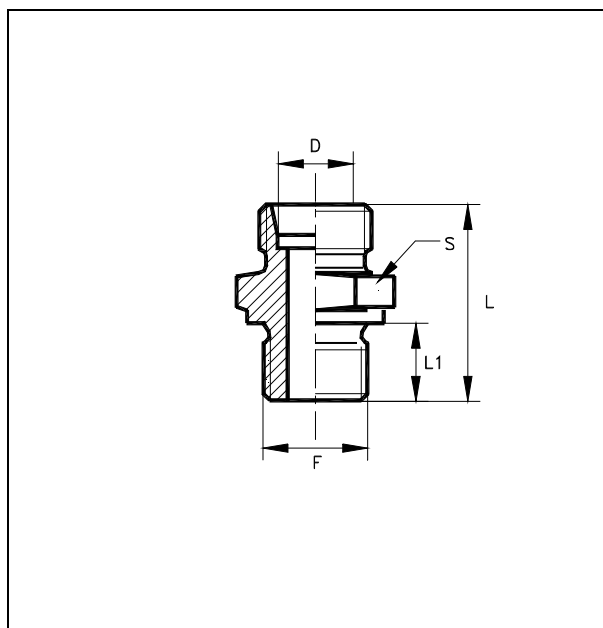
Schwere Baureihe
 Einschraubgewinde: metrisch-fein zylindrisch
 Abdichtart Form D-DIN 3852 mit Dichtring

Unions simple mâles

Série lourde
 Filetage : métrique cylindrique
 Arête d'étanchéité forme D-DIN, joint métallique

Racores rectos

Serie pesada
 Rosca: métrica cilíndrica
 Estanquedad forma D-DIN, junta metálica



Ø Tubo D	S	L	L1	F		TAA
6	17	33	12	M12x1.5	T-GE 6-S M12x1.5 A	20750011
	19	33	12	M14x1.5	T-GE 6-S M14x1.5 A	20750211
	22	33	12	M16x1.5	T-GE 6-S M16x1.5 A	20750411
8	19	35	12	M14x1.5	T-GE 8-S M14x1.5 A	20755011
	22	35	12	M16x1.5	T-GE 8-S M16x1.5 A	20755211
	27	37	14	M22x1.5	T-GE 8-S M22x1.5 A	20755411
10	19	35	12	M14x1.5	T-GE 10-S M14x1.5 A	20760011
	22	35	12	M16x1.5	T-GE 10-S M16x1.5 A	20760211
	27	37	14	M22x1.5	T-GE 10-S M22x1.5 A	20760411
12	22	35	12	M16x1.5	T-GE 12-S M16x1.5 A	20765011
	24	35	12	M18x1.5	T-GE 12-S M18x1.5 A	20765211
	27	37	14	M22x1.5	T-GE 12-S M22x1.5 A	20765411
14	24	38	12	M18x1.5	T-GE 14-S M18x1.5 A	20770011
	27	40	14	M20x1.5	T-GE 14-S M20x1.5 A	20770211
	27	40	14	M22x1.5	T-GE 14-S M22x1.5 A	20770411
16	27	40	14	M20x1.5	T-GE 16-S M20x1.5 A	20775011
	27	40	14	M22x1.5	T-GE 16-S M22x1.5 A	20775211
	32	42	16	M27x2	T-GE 16-S M27x2 A	20775411

Raccordi d'estremità dritti

Serie pesante
 Filettatura: metrica cilindrica
 Tenuta a forma D-DIN, anello di tenuta metallico

Male stud couplings

Heavy range
 Stud thread: metric parallel
 Stud sealing form D-DIN 3852, washer

Gerade Einschraubverschraubungen

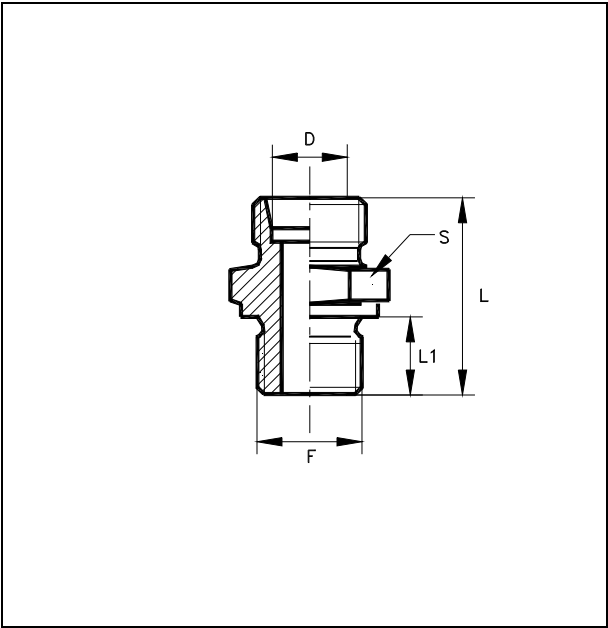
Schwere Baureihe
 Einschraubgewinde: metrsch-fein zylindrisch
 Abdichtart Form D-DIN 3852 mit Dichtring

Unions simple mâles

Série lourde
 Filetage : métrique cylindrique
 Arête d'étanchéité forme D-DIN, joint métallique

Racores rectos

Serie pesada
 Rosca: métrica cilíndrica
 Estanquiedad forma D-DIN, junta metálica



Ø Tubo D	S	L	L1	F		TAA
20	30	45	14	M22x1.5	T-GE 20-S M22x1.5	20780011
	32	47	16	M27x2	T-GE 20-S M27x2	20780211
	36	48	16	M30x2	T-GE 20-S M30x2	20780411
25	36	52	16	M26x1.5	T-GE 25-S M26x1.5	20785111
	36	52	16	M27x2	T-GE 25-S M27x2	20785011
	36	52	16	M30x1.5	T-GE 25-S M30x1.5	20785311
	41	53	18	M33x2	T-GE 25-S M33x2	20785211
30	46	55	18	M33x2	T-GE 30-S M33x2	20790011
	51	57	20	M42x2	T-GE 30-S M42x2	20790211
38	55	61	20	M42x2	T-GE 38-S M42x2	20795011
	55	63	22	M48x2	T-GE 38-S M48x2	20795211

Istruzione di montaggio

1. Oleare i filetti d'estremità e le 2 O-ring.
2. Infilare la vite inferiore nel corpo del raccordo ed avvitare a mano.
3. Orientare il lato collegamento tubo e serrare la vite con la coppia di serraggio prescritto (vedere generalità, controbilanciando il corpo del raccordo)
4. Montare il tubo, controbilanciando il corpo del raccordo.
5. Mettere il tappo e serrare con la coppia prescritta (mass. _ giro).
6. Si può smontare e rimontare il raccordo senza limitazioni.
Verificare lo stato degli anelli torici e sostituire se necessario.

Attenzione : Un montaggio non conforme (lubrificazione o danneggiamento dell'O-ring superiore) riduce la pressione nominale e la durata della guarnizione con rischio di perdite.

Assembly instructions

1. Oil the threads and the 2 O-ring.
2. Insert the bolt into the banjo and tighten by hand.
3. Set the tube connection to the desired direction and tighten the bolt with the recommended tightening torque (see Technical notes) holding the banjo firmly by means of a spanner.
4. Fix the tube holding the banjo firmly by means of a spanner.
5. Set the blanking plug and tighten with the recommended tightening torque (max. _ of turn) holding the body of the coupling firmly by means of a spanner.
6. Repeated reassembly is possible. Check seals for possible damage and replace if necessary.

Attention : Different assembly (lubrication or damaging of the O-rings) reduces the nominal pressure rating and the life of the coupling, causing leakages.