

Raccordi d'estremità diritti

Serie leggera
 Filettatura: gas cilindrica
 Tenuta a forma B-DIN 3852, spigolo metallico

Male stud couplings

Light range
 Stud thread: B.S.P. parallel
 Stud sealing form B-DIN, by sealing shoulder

Gerade Einschraubverschraubungen

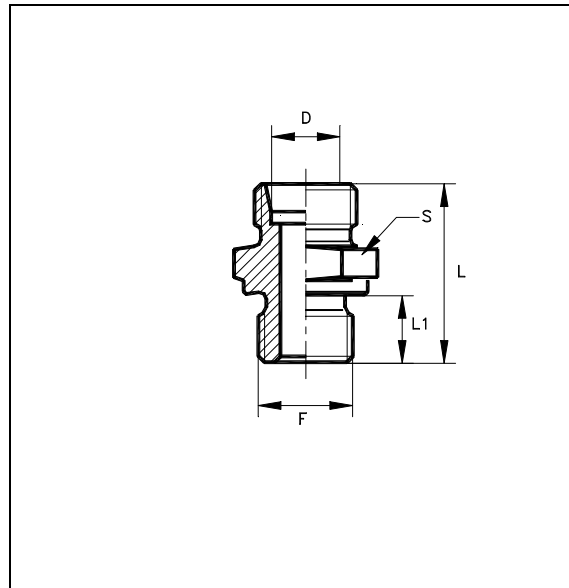
Leichte Baureihe
 Einschraubgewinde: Whitworth zylindrisch
 Abdichtart Form B-DIN durch Dichtkante

Unions simple mâles

Série légère
 Filetage : Whitworth cylindrique
 Arête d'étanchéité forme B-DIN, métal-métal

Racores rectos

Serie ligera
 Rosca: gas cilíndrica
 Estanquedad forma B-DIN, canto torneado metálico



Ø Tubo D	S	L	L1	F		TAA
6	14	23.5	8	R 1/8"	T-GE 6-LR 1/8"	10600011
	19	28	12	R 1/4"	T-GE 6-LR 1/4"	10600211
	22	30	12	R 3/8"	T-GE 6-LR 3/8"	10600411
8	14	24.5	8	R 1/8"	T-GE 8-LR 1/8"	10605111
	19	29	12	R 1/4"	T-GE 8-LR 1/4"	10605011
	22	30	12	R 3/8"	T-GE 8-LR 3/8"	10605211
	27	33	14	R 1/2"	T-GE 8-LR 1/2"	10605411
10	17	25	8	R 1/8"	T-GE 10-LR 1/8"	10610211
	19	30	12	R 1/4"	T-GE 10-LR 1/4"	10610011
	22	31.5	12	R 3/8"	T-GE 10-LR 3/8"	10610411
	27	34	14	R 1/2"	T-GE 10-LR 1/2"	10610611
12	19	31	12	R 1/4"	T-GE 12-LR 1/4"	10615211
	22	31	12	R 3/8"	T-GE 12-LR 3/8"	10615011
	27	34	14	R 1/2"	T-GE 12-LR 1/2"	10615411
	32	36	16	R 3/4"	T-GE 12-LR 3/4"	10615511
15	24	32.5	12	R 3/8"	T-GE 15-LR 3/8"	10620211
	27	35	14	R 1/2"	T-GE 15-LR 1/2"	10620011
	32	38	16	R 3/4"	T-GE 15-LR 3/4"	10620411

Raccordi d'estremità diritti

Serie leggera
 Filettatura: gas cilindrica
 Tenuta a forma B-DIN 3852, spigolo metallico

Male stud couplings

Light range
 Stud thread: B.S.P. parallel
 Stud sealing form B-DIN, by sealing shoulder

Gerade Einschraubverschraubungen

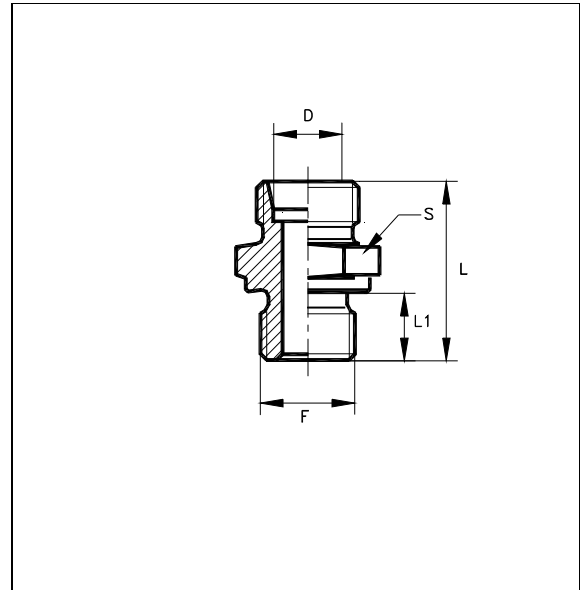
Leichte Baureihe
 Einschraubgewinde: Whitworth zylindrisch
 Abdichtart Form B-DIN durch Dichtkante

Unions simple mâles

Série légère
 Filetage: Whitworth cylindrique
 Arête d'étanchéité forme B-DIN, métal-métal

Racores rectos

Serie ligera
 Rosca: gas cilindrca
 Estanquiedad forma B-DIN, canto torneado metálico



Ø Tubo D	S	L	L1	F		TAA
16	27	35	14	R 1/2"	T-GE 16-LR 1/2"	10666011
18	27	33.5	14	R 3/8"	T-GE 18-LR 3/8"	10625211
	27	36	16	R 1/2"	T-GE 18-LR 1/2"	10625011
	32	38	18	R 3/4"	T-GE 18-LR 3/4"	10625411
22	32	38	14	R 1/2"	T-GE 22-LR 1/2"	10630211
	32	40	16	R 3/4"	T-GE 22-LR 3/4"	10630011
	41	42	18	R 1"	T-GE 22-LR 1"	10630411
28	41	41	16	R 3/4"	T-GE 28-LR 3/4"	10635211
	41	41	18	R 1"	T-GE 28-LR 1"	10635011
35	50	46	18	R 1"	T-GE 35-LR 1"	10640211
	50	46	20	R 1"1/4	T-GE 35-LR 1"1/4	10640011
42	55	52	22	R 1"1/4	T-GE 42-LR 1"1/4	10645211
	55	52	22	R 1"1/2	T-GE 42-LR 1"1/2	10645011

Raccordi d'estremità diritti

Serie pesante
 Filettatura: gas cilindrica
 Tenuta a forma B-DIN 3852, spigolo metallico

Male stud couplings

Heavy range
 Stud thread: B.S.P. parallel
 Stud sealing form B-DIN, by sealing shoulder

Gerade Einschraubverschraubungen

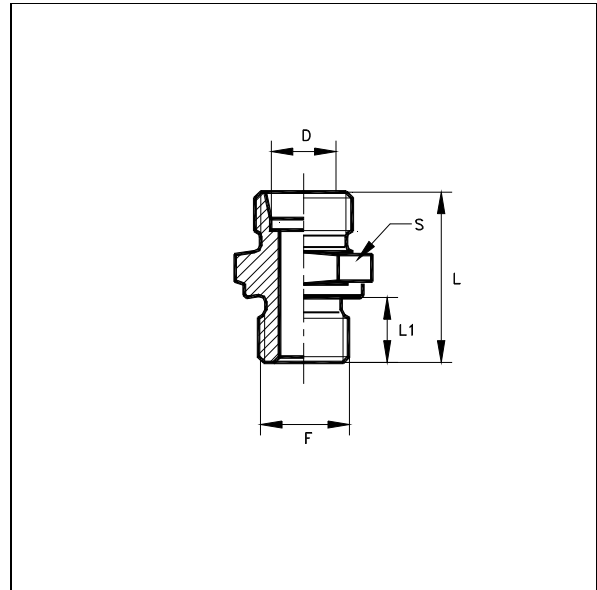
Schwere Baureihe
 Einschraubgewinde: Whitworth zylindrisch
 Abdichtart Form B-DIN durch Dichtkante

Unions simple mâles

Série lourde
 Filetage: Whitworth cylindrique
 Arête d'étanchéité forme B-DIN, métal-métal

Racores rectos

Serie pesada
 Rosca: gas cilindrca
 Estanquiedad forma B-DIN, canto torneado metálico



Ø Tubo D	S	L	L1	F		TAA
6	17	32	12	R 1/8"	T-GE 6-SR 1/8"	10650611
	19	32	12	R 1/4"	T-GE 6-SR 1/4"	10650011
	22	32	12	R 3/8"	T-GE 6-SR 3/8"	10650211
	27	35	14	R 1/2"	T-GE 6-SR 1/2"	10650411
8	19	34	12	R 1/4"	T-GE 8-SR 1/4"	10655011
	22	34	12	R 3/8"	T-GE 8-SR 3/8"	10655211
	27	35	14	R 1/2"	T-GE 8-SR 1/2"	10655411
10	19	34	12	R 1/4"	T-GE 10-SR 1/4"	10660211
	22	34.5	12	R 3/8"	T-GE 10-SR 3/8"	10660011
	27	35	14	R 1/2"	T-GE 10-SR 1/2"	10660411
12	22	39	12	R 1/4"	T-GE 12-SR 1/4"	10665311
	22	36.5	12	R 3/8"	T-GE 12-SR 3/8"	10665011
	27	39	14	R 1/2"	T-GE 12-SR 1/2"	10665211
	32	41	14	R 3/4"	T-GE 12-SR 3/4"	10665411
14	24	39	12	R 3/8"	T-GE 14-SR 3/8"	10670211
	27	41	14	R 1/2"	T-GE 14-SR 1/2"	10670011

Raccordi d'estremità diritti

Serie pesante
 Filettatura: gas cilindrica
 Tenuta a forma B-DIN 3852, spigolo metallico

Male stud couplings

Heavy range
 Stud thread: B.S.P. parallel
 Stud sealing form B-DIN, by sealing shoulder

Gerade Einschraubverschraubungen

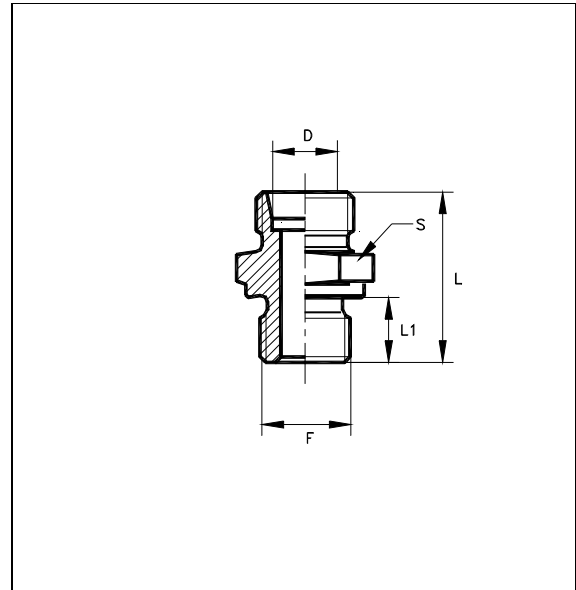
Schwere Baureihe
 Einschraubgewinde: Whitworth zylindrisch
 Abdichtart Form B-DIN durch Dichtkante

Unions simple mâles

Série lourde
 Filetage: Whitworth cylindrique
 Arête d'étanchéité forme B-DIN, métal-métal

Racores rectos

Serie pesada
 Rosca: gas cilíndrica
 Estanquedad forma B-DIN, canto torneado metálico



Ø Tubo D	S	L	L1	F		TAA
16	27	38.5	12	R 3/8"	T-SR 16-SR 3/8"	10675211
	27	41	14	R 1/2"	T-SR 16-SR 1/2"	10675011
	32	45	14	R 3/4"	T-SR 16-SR 3/4"	10675311
20	32	45	14	R 1/2"	T-SR 20-SR 1/2"	10680211
	32	47	16	R 3/4"	T-SR 20-SR 3/4"	10680011
	41	51.5	18	R 1"	T-SR 20-SR 1"	10680411
25	41	51	16	R 3/4"	T-SR 25-SR 3/4"	10685211
	41	53	18	R 1"	T-SR 25-SR 1"	10685011
	50	65	20	R 1"1/4	T-SR 25-SR 1"1/4	10685111
30	46	53	16	R 3/4"	T-SR 30-SR 3/4"	10690411
	46	55	18	R 1"	T-SR 30-SR 1"	10690211
	50	57	20	R 1"1/4	T-SR 30-SR 1"1/4	10690011
38	55	62	20	R 1"1/4	T-SR 38-SR 1"1/4	10695211
	55	64	22	R 1"1/2	T-SR 38-SR 1"1/2	10695011

SERIE L**DIN 3852-E****T – GE – LM****Raccordi d'estremità diritti**

Serie leggera
 Filettatura: metrica cilindrica
 Tenuta a forma B-DIN 3852, spigolo metallico

Male stud couplings

Light range
 Stud thread: metric parallel
 Stud sealing form B-DIN, by sealing shoulder

Gerade Einschraubverschraubungen

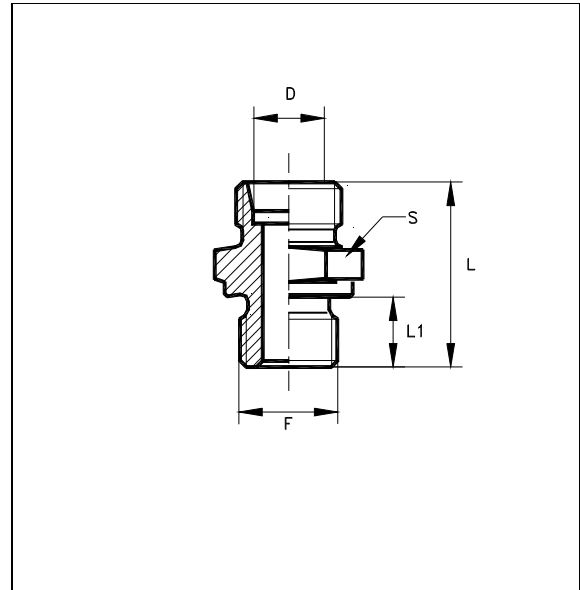
Leichte Baureihe
 Einschraubgewinde: metrisch-fein zylindrisch
 Abdichtart form B-DIN, durch Dichtkante

Unions simple mâles

Série légère
 Filetage: métrique cylindrique
 Arête d'étanchéité forme B-DIN, métal-métal

Racores rectos

Serie ligera
 Rosca: metrica cilindrica
 Estanquiedad forma B-DIN, canto torneado metalico



Ø Tubo D	S	L	L1	F		TAA
6	14	24	8	M10x1	T-GE 6-LM 10x1	10700011
	14	24	8	M10x1.25	T-GE 6-LM 10x1.25	10700111
	17	28	12	M12x1	T-GE 6-LM 12x1	10700211
	17	28	12	M12x1.25	T-GE 6-LM 12x1.25	10700311
	17	28	12	M12x1.5	T-GE 6-LM 12x1.5	10700411
	19	28	12	M14x1.5	T-GE 6-LM 14x1.5	10700511
	22	28	12	M16x1.5	T-GE 6-LM 16x1.5	10700611
	24	28	12	M18x1.5	T-GE 6-LM 18x1.5	10700711
	27	29	14	M20x1.5	T-GE 6-LM 20x1.5	10700811
27	30	14	M22x1.5	T-GE 6-LM 22x1.5	10700911	
8	14	28	8	M10x1	T-GE 8-LM 10x1	10705011
	14	26	8	M10x1.25	T-GE 8-LM 10x1.25	10705111
	17	30	12	M12x1	T-GE 8-LM 12x1	10705211
	17	30	12	M12x1.25	T-GE 8-LM 12x1.25	10705311
	17	30	12	M12x1.5	T-GE 8-LM 12x1.5	10705411
	19	30	12	M14x1.5	T-GE 8-LM 14x1.5	10705511
	22	30	12	M16x1.5	T-GE 8-LM 16x1.5	10705611
	24	30	12	M18x1.5	T-GE 8-LM 18x1.5	10705711
	27	31	14	M20x1.5	T-GE 8-LM 20x1.5	10705811
	27	32	14	M22x1.5	T-GE 8-LM 22x1.5	10705911
	32	34	16	M26x1.5	T-GE 8-LM 26x1.5	10706011
	36	35	16	M30x1.5	T-GE 8-LM 30x1.5	10706111

SERIE L**DIN 3852-E****T – GE – LM****Raccordi d'estremità diritti**

Serie leggera
 Filettatura: metrica cilindrica
 Tenuta a forma B-DIN 3852, spigolo metallico

Male stud couplings

Light range
 Stud thread: metric parallel
 Stud sealing form B-DIN, by sealing shoulder

Gerade Einschraubverschraubungen

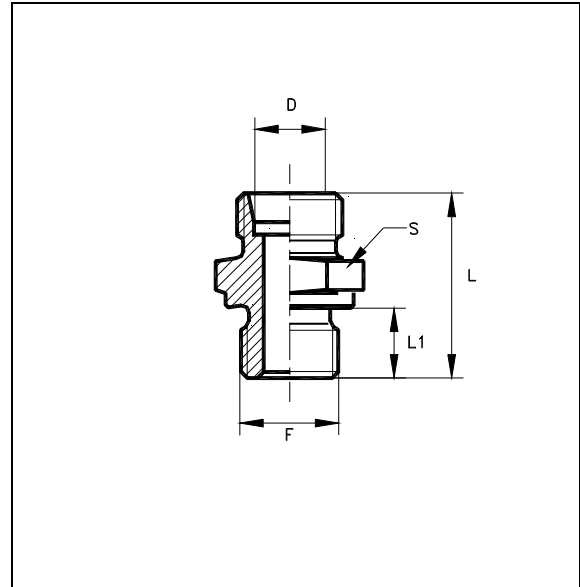
Leichte Baureihe
 Einschraubgewinde: metrisch-fein zylindrisch
 Abdichtart form B-DIN durch Dichtkante

Unions simple mâles

Série légère
 Filetage: métrique cylindrique
 Arête d'étanchéité forme B-DIN, métal-métal

Racores rectos

Serie ligera
 Rosca: metrica cilindrica
 Estanquiedad forma B-DIN, canto torneado metálico



Ø Tubo D	S	L	L1	F		TAA
10	17	31	12	M 12x1.5	T-GE 10-LM 12x1.5	10710011
	19	31	12	M 14x1.5	T-GE 10-LM 14x1.5	10710211
	22	31	12	M 16x1.5	T-GE 10-LM 16x1.5	10710311
	24	31	12	M 18x1.5	T-GE 10-LM 18x1.5	10710411
	27	32	14	M 20x1.5	T-GE 10-LM 20x1.5	10710511
	27	33	14	M 22x1.5	T-GE 10-LM 22x1.5	10710611
	32	35	16	M 26x1.5	T-GE 10-LM 26x1.5	10710711
	36	36	16	M 30x1.5	T-GE 10-LM 30x1.5	10710811
12	19	32	12	M 12x1.5	T-GE 12-LM 12x1.5	10715011
	19	32	12	M 14x1.5	T-GE 12-LM 14x1.5	10715111
	22	32	12	M 16x1.5	T-GE 12-LM 16x1.5	10715211
	24	32	12	M 18x1.5	T-GE 12-LM 18x1.5	10715311
	27	33	14	M 20x1.5	T-GE 12-LM 20x1.5	10715411
	27	34	14	M 22x1.5	T-GE 12-LM 22x1.5	10715511
	32	36	16	M 26x1.5	T-GE 12-LM 26x1.5	10715611
	36	37	16	M 30x1.5	T-GE 12-LM 30x1.5	10715711

Raccordi d'estremità diritti

Serie leggera
 Filettatura: metrica cilindrica
 Tenuta a forma B-DIN 3852, spigolo metallico

Male stud couplings

Light range
 Stud thread: metric parallel
 Stud sealing form B-DIN, by sealing shoulder

Gerade Einschraubverschraubungen

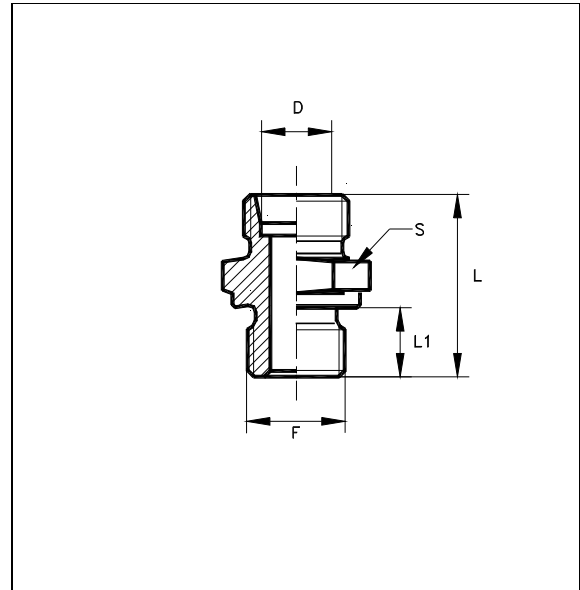
Leichte Baureihe
 Einschraubgewinde: metrisch-fein zylindrisch
 Abdichtart form B-DIN, durch Dichtkante

Unions simple mâles

Série légère
 Filetage: métrique cylindrique
 Arête d'étanchéité forme B-DIN, métal-métal

Racores rectos

Serie ligera
 Rosca: metrica cilindrica
 Estanquiedad forma B-DIN, canto torneado metálico



Ø Tubo D	S	L	L1	F		TAA
15	22	34	12	M12x1.5	T-GE 15-LM 12x1.5	10720011
	22	34	12	M14x1.5	T-GE 15-LM 14x1.5	10720111
	22	34	12	M16x1.5	T-GE 15-LM 16x1.5	10720211
	24	34	12	M18x1.5	T-GE 15-LM 18x1.5	10720311
	27	35	14	M20x1.5	T-GE 15-LM 20x1.5	10720411
	27	36	14	M22x1.5	T-GE 15-LM 22x1.5	10720511
	32	38	16	M26x1.5	T-GE 15-LM 26x1.5	10720611
	36	39	16	M30x1.5	T-GE 15-LM 30x1.5	10720711
16	22	34	12	M16x1.5	T-GE 16-LM 16x1.5	10766011
	24	34	12	M18x1.5	T-GE 16-LM 18x1.5	10766111
	27	35	14	M20x1.5	T-GE 16-LM 20x1.5	10766211
	27	36	14	M22x1.5	T-GE 16-LM 22x1.5	10766311
	32	38	16	M26x1.5	T-GE 16-LM 26x1.5	10766411
	36	39	16	M30x1.5	T-GE 16-LM 30x1.5	10766511

Raccordi d'estremità dritti

Serie leggera
 Filettatura: metrica cilindrica
 Tenuta a forma B-DIN 3852, spigolo metallico

Male stud couplings

Light range
 Stud thread: metric parallel
 Stud sealing form B-DIN, by sealing shoulder

Gerade Einschraubverschraubungen

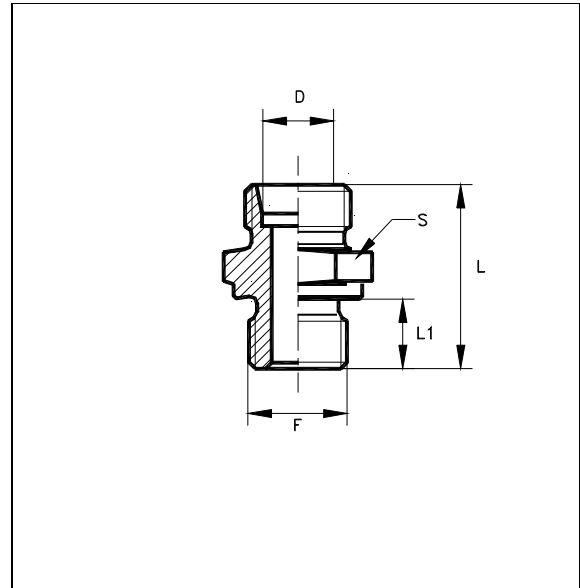
Leichte Baureihe
 Einschraubgewinde: metrisch-fein zylindrisch
 Abdichtart form B-DIN, durch Dichtkante

Unions simple mâles

Série légère
 Filetage: métrique cylindrique
 Arête d'étanchéité forme B-DIN, métal-métal

Racores rectos

Serie ligera
 Rosca: metrica cilindrica
 Estanquiedad forma B-DIN, canto torneado metalico



Ø Tubo D	S	L	L1	F		TAA
18	27	34	16	M22x1.5	T-GE 18-LM 22x1.5	10725011
	32	37	16	M26x1.5	T-GE 18-LM 26x1.5	10725111
	36	38	16	M30x1.5	T-GE 18-LM 30x1.5	10725211
22	30	38	14	M22x1.5	T-GE 22-LM 22x1.5	10730011
	32	39	16	M26x1.5	T-GE 22-LM 26x1.5	10730111
	36	40	16	M30x1.5	T-GE 22-LM 30x1.5	10730211
28	36	44	16	M30x1.5	T-GE 28-LM 30x1.5	10735011
	41	45	18	M33x2	T-GE 28-LM 33x2	10735111
35	50	49	20	M42x2	T-GE 35-LM 42x2	10740011
	55	51	22	M48x2	T-GE 35-LM 48x2	10740111
42	55	53	22	M48x2	T-GE 42-LM 48x2	10745011

Raccordi d'estremità diritti

Serie pesante
 Filettatura: metrica cilindrica
 Tenuta a forma B-DIN 3852, spigolo metallico

Male stud couplings

Heavy range
 Stud thread: metric parallel
 Stud sealing form B-DIN, by sealing shoulder

Gerade Einschraubverschraubungen

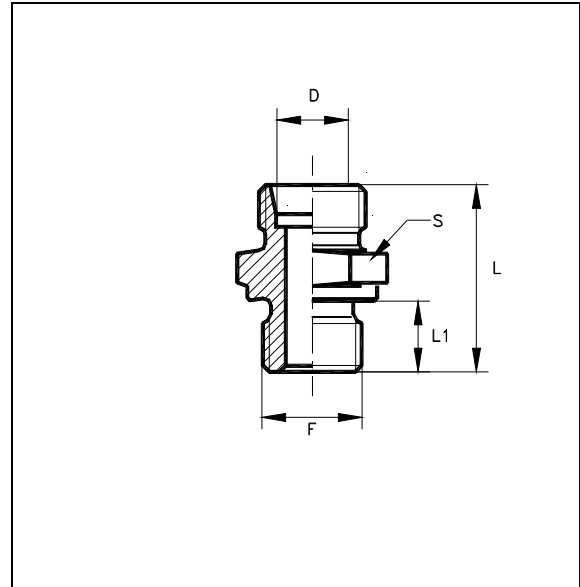
Schwere Baureihe
 Einschraubgewinde: metrisch-fein zylindrisch
 Abdichtart form B-DIN, durch Dichtkante

Unions simple mâles

Série lourde
 Filetage: métrique cylindrique
 Arête d'étanchéité forme B-DIN, métal-métal

Racores rectos

Serie pesada
 Rosca: metrica cilindrica
 Estanquiedad forma B-DIN, canto torneado metálico



Ø Tubo D	S	L	L1	F		TAA
6	17	32	12	M12x1.5	T-GE 6-SM 12x1.5	10750011
	19	33	12	M14x1.5	T-GE 6-SM 14x1.5	10750211
	22	33	12	M16x1.5	T-GE 6-SM 16x1.5	10750411
8	19	34	12	M14x1.5	T-GE 8-SM 14x1.5	10755011
	22	34	12	M16x1.5	T-GE 8-SM 16x1.5	10755211
	27	37	14	M22x1.5	T-GE 8-SM 22x1.5	10755411
10	19	35.5	12	M14x1.5	T-GE 10-SM 14x1.5	10760011
	22	35.5	12	M16x1.5	T-GE 10-SM 16x1.5	10760211
	24	36.5	12	M18x1.5	T-GE 10-SM 18x1.5	10760311
	27	37.5	14	M22x1.5	T-GE 10-SM 22x1.5	10760411
12	22	35.5	12	M16x1.5	T-GE 12-SM 16x1.5	10765011
	24	35.5	12	M18x1.5	T-GE 12-SM 18x1.5	10765211
	27	37.5	14	M22x1.5	T-GE 12-SM 22x1.5	10765411
14	24	38	12	M18x1.5	T-GE 14-SM 18x1.5	10770011
	27	40	14	M20x1.5	T-GE 14-SM 20x1.5	10770211
	27	40	14	M22x1.5	T-GE 14-SM 22x1.5	10770411

Raccordi d'estremità diritti

Serie pesante
 Filettatura: metrica cilindrica
 Tenuta a forma B-DIN 3852, spigolo metallico

Male stud couplings

Heavy range
 Stud thread: metric parallel
 Stud sealing form B-DIN, by sealing shoulder

Gerade Einschraubverschraubungen

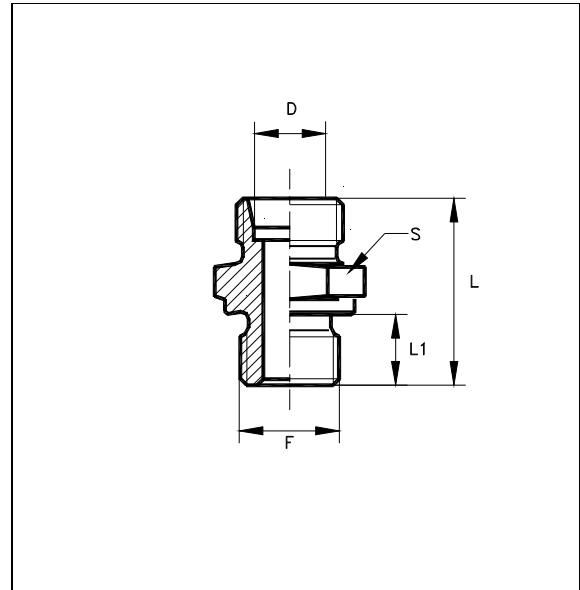
Schwere Baureihe
 Einschraubgewinde: metrisch-fein zylindrisch
 Abdichtart form B-DIN, durch Dichtkante

Unions simple mâles

Série lourde
 Filetage: métrique cylindrique
 Arête d'étanchéité forme B-DIN, métal-métal

Racores rectos

Serie pesada
 Rosca: metrica cilindrica
 Estanquiedad forma B-DIN canto torneado metálico



Ø Tubo D	S	L	L1	F		TAA
16	27	38	13	M18x1.5	T-GE 16-SM 18x1.5	10775011
	27	40.5	14	M20x1.5	T-GE 16-SM 20x1.5	10775111
	27	40.5	14	M22x1.5	T-GE 16-SM 22x1.5	10775211
	32	42.5	14	M27x2	T-GE 16-SM 27x2	10775411
20	30	45.5	14	M22x1.5	T-GE 20-SM 22x1.5	10780011
	32	47.5	16	M27x2	T-GE 20-SM 27x2	10780211
	36	48.5	16	M30x2	T-GE 20-SM 30x2	10780411
25	36	51	16	M27x2	T-GE 25-SM 27x2	10785011
	41	53	18	M33x2	T-GE 25-SM 33x2	10785211
30	46	54.5	18	M33x2	T-GE 30-SM 33x2	10790011
	50	56.5	20	M42x2	T-GE 30-SM 42x2	10790211
38	55	61	20	M42x2	T-GE 38-SM 42x2	10795011
	55	63	22	M48x2	T-GE 38-SM 48x2	10795211

Istruzione di montaggio

1. Oleare i filetti d'estremità e le 2 O-ring.
2. Infilare la vite inferiore nel corpo del raccordo ed avvitare a mano.
3. Orientare il lato collegamento tubo e serrare la vite con la coppia di serraggio prescritto (vedere generalità, controbilanciando il corpo del raccordo)
4. Montare il tubo, controbilanciando il corpo del raccordo.
5. Mettere il tappo e serrare con la coppia prescritta (mass. _ giro).
6. Si può smontare e rimontare il raccordo senza limitazioni.
Verificare lo stato degli anelli torici e sostituire se necessario.

Attenzione : Un montaggio non conforme (lubrificazione o danneggiamento dell'O-ring superiore) riduce la pressione nominale e la durata della guarnizione con rischio di perdite.

Assembly instructions

1. Oil the threads and the 2 O-ring.
2. Insert the bolt into the banjo and tighten by hand.
3. Set the tube connection to the desired direction and tighten the bolt with the recommended tightening torque (see Technical notes) holding the banjo firmly by means of a spanner.
4. Fix the tube holding the banjo firmly by means of a spanner.
5. Set the blanking plug and tighten with the recommended tightening torque (max. _ of turn) holding the body of the coupling firmly by means of a spanner.
6. Repeated reassembly is possible. Check seals for possible damage and replace if necessary.

Attention : Different assembly (lubrication or damaging of the O-rings) reduces the nominal pressure rating and the life of the coupling, causing leakages.