

Raccordi d'estremità diritti

Filettatura: gas conica

Male stud couplings

Stud thread: B.S.P. taper

Gerade Einschraubverschraubungen

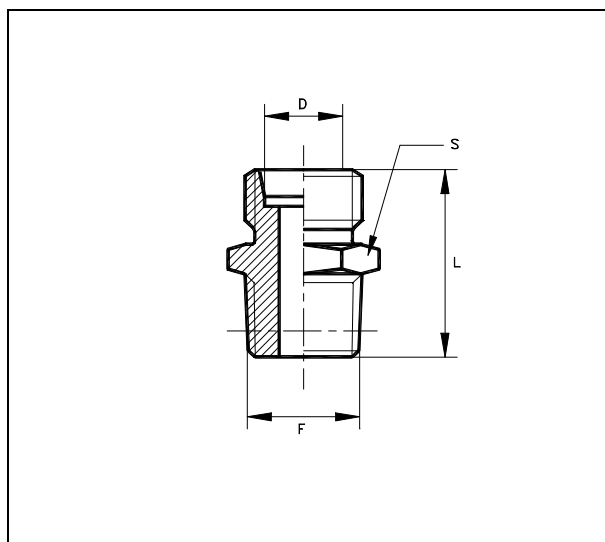
Einschraubgewinde: Whitworth kegelig

Unions simple mâles

Filetage: Whitworth conique

Racores rectos

Rosca: gas cónica



Serie	Ø Tubo D	S	L	F		TAA
LL	4	10	22	R 1/8"	T-GE 4-LLR	1000011
	6	11	22.5	R 1/8"	T-GE 6-LLR	10010011
	8	12	22.5	R 1/8"	T-GE 8-LLR	10015011
L	6	12	24	R 1/8"	T-GE 6-LR keg	10100011
		17	27	R 1/4"	T-GE 6-LR 1/4"keg	10100111
	8	17	29	R 1/4"	T-GE 8-LR keg	10105011
		19	29	R 3/8"	T-GE 8-LR 3/8"keg	10105111
	10	17	30	R 1/4"	T-GE 10-LR keg	10110011
		19	30	R 3/8"	T-GE 10-LR 3/8"keg	10110111
	12	19	31	R 3/8"	T-GE 12-LR keg	10115011
		22	34	R 1/2"	T-GE 12-LR 1/2"keg	10115111
	14	22	32	R 1/2"	T-GE 14-LR keg	10116011
	15	24	32	R 3/8"	T-GE 15-LR keg	10120011
		24	35	R 1/2"	T-GE 15-LR 1/2"keg	10120111
	16	24	35	R 1/2"	T-GE 16-LR keg	10166011
	18	27	36.5	R 1/2"	T-GE 18-LR keg	10125011
30		38.5	R 3/4"	T-GE 18-LR 3/4"keg	10125111	
22	32	40.5	R 3/4"	T-GE 22-LR keg	10130011	
	32	38.5	R 1/2"	T-GE 22-LR 1/2"keg	10130111	
28	36	43.5	R 3/4"	T-GE 28-LR 3/4"keg	10135011	
	41	45.5	R 1"	T-GE 28-LR keg	10135111	
35	46	47.5	R 1" 1/4	T-GE 35-LR keg	10140011	
42	55	50	R 1" 1/2	T-GE 42-LR keg	10145011	

Raccordi d'estremità diritti

Filettatura: gas conica

Male stud couplings

Stud thread: B.S.P. taper

Gerade Einschraubverschraubungen

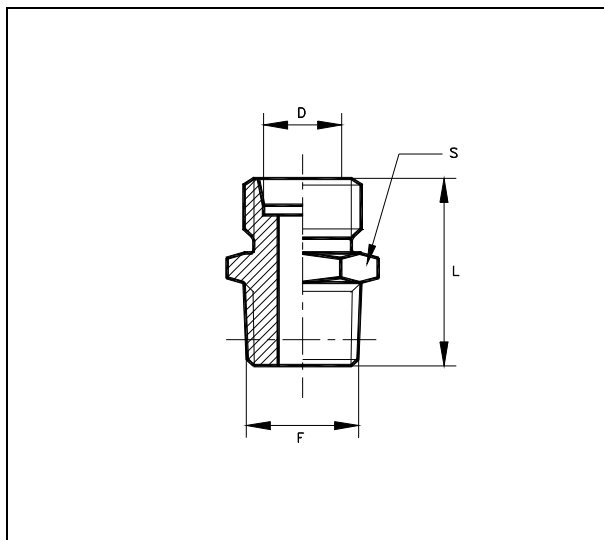
Einschraubgewinde: Whitworth kegelig

Unions simple mâles

Filetage: Whitworth conique

Racores rectos

Rosca: gas cónica



Serie	Ø Tubo D	S	L	F		TAA
S	6	17	34	R 1/4"	T-GE 6-SR keg	10150011
	8	17	34	R 1/4"	T-GE 8-SR keg	10155011
	10	19	34.5	R 3/8"	T-GE 10-SR keg	10160011
	12	22	36.5	R 3/8"	T-GE 12-SR keg	10165011
	14	24	42	R 1/2"	T-GE 14-SR keg	10170011
	16	27	41.5	R 1/2"	T-GE 16-SR keg	10175011
	20	32	46.5	R 3/4"	T-GE 20-SR keg	10180011
	25	41	52	R 1"	T-GE 25-SR keg	10185011
	30	46	54.5	R 1"1/4	T-GE 30-SR keg	10190011
	38	55	60	R 1"1/2	T-GE 38-SR keg	10195011

Raccordi d'estremità diritti

Filettatura: metrica conica

Male stud couplings

Stud thread: metric taper

Gerade Einschraubverschraubungen

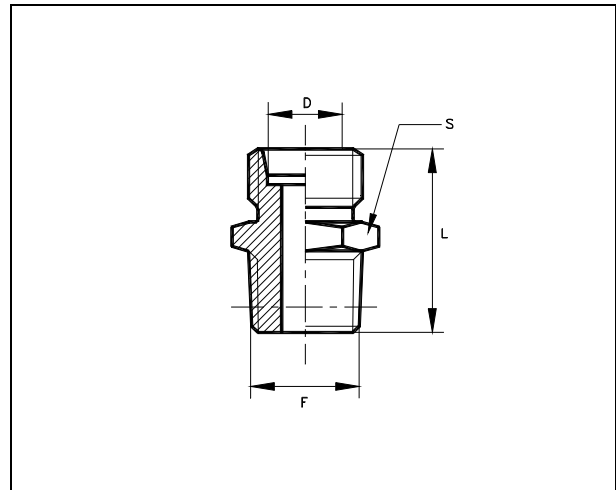
Einschraubgewinde: metrisch-fein kegelig

Unions simple mâles

Filetage : métrique conique

Racores rectos

Rosca: métreica cónica



Serie	Ø Tubo D	S	L	F		TAA	
LL	4	10	22	M 8x1	T-GE 4-LLM	10200011	
	6	11	22.5	M10x1	T-GE 6-LLM	10210011	
	8	12	22.5	M10x1	T-GE 8-LLM	10215011	
L	6	14	24	M10x1	T-GE 6-LM keg	10300011	
		14	24	M10x1.25	T-GE 6-LM 10x1.25keg	10300111	
	8	17	29	M12x1.5	T-GE 8-LM keg	10305011	
		10	17	30	M14x1.5	T-GE 10-LM keg	10310011
		12	19	31	M16x1.5	T-GE 12-LM keg	10315011
		14	22	32	M18x1.5	T-GE 14-LM keg	10316011
	15	24	35	M18x1.5	T-GE 15-LM keg	10320011	
		24	35	M22x1.5	T-GE 15-LM 22x1.5 keg	10320111	
	16	24	35	M22x1.5	T-GE 16-LM keg	10366011	
	18	27	36.5	M22x1.5	T-GE 18-LM keg	10325011	
		32	38.5	M26x1.5	T-GE 18-LM 26x1.5 keg	10325111	
	22	30	40.5	M26x1.5	T-GE 22-LM keg	10330011	
	28	41	43.5	M33x2	T-GE 28-LM keg	10335011	
35	46	47.6	M42x2	T-GE 35-LM keg	10340011		
42	55	50	M48x2	T-GE 42-LM keg	10345011		

Raccordi d'estremità diritti

Filettatura: metrica conica

Male stud couplings

Stud thread: metric taper

Gerade Einschraubverschraubungen

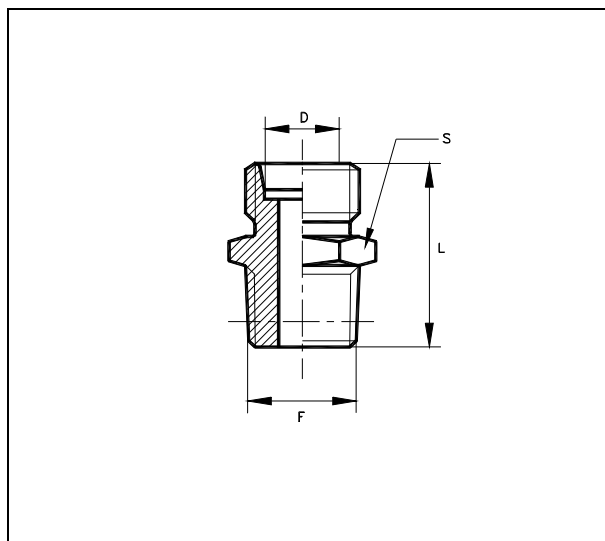
Einschraubgewinde: metrisch-fein kegelig

Unions simple mâles

Filetage : métrique conique

Racores rectos

Rosca: métrica cónica



Serie	Ø Tubo D	S	L	F		TAA
S	6	17	34	M12x1.5	T-GE 6-SM keg	10350011
	8	17	34	M14x1.5	T-GE 8-SM keg	10355011
	10	19	34.5	M16x1.5	T-GE 10-SM keg	10360011
	12	22	36.5	M18x1.5	T-GE 12-SM keg	10365011
	14	27	42	M20x1.5	T-GE 14-SM keg	10370011
	16	27	41.5	M22x1.5	T-GE 16-SM keg	10375011
	20	32	46.5	M27x2	T-GE 20-SM keg	10380011
	25	41	52	M33x2	T-GE 25-SM keg	10385011
	30	46	54.5	M42x2	T-GE 30-SM keg	10390011
	38	55	60	M48x2	T-GE 38-SM keg	10395011

Raccordi d'estremità diritti

Filettatura: NPT

Male stud couplings

Stud thread: NPT

Gerade Einschraubverschraubungen

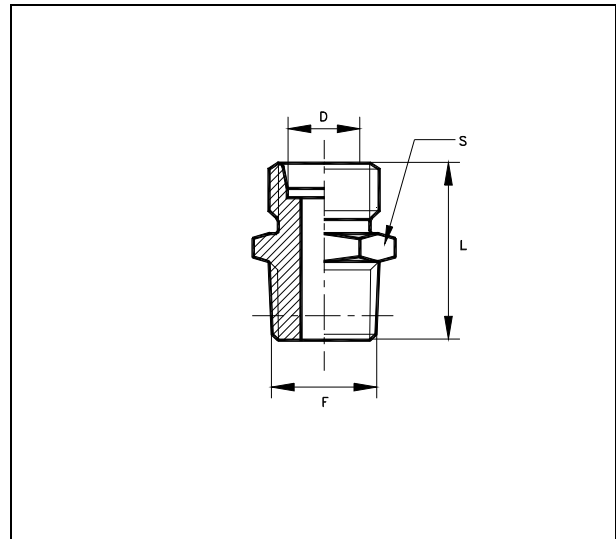
Einschraubgewinde: NPT

Unions simple mâles

Filetage: NPT

Racores rectos

Rosca: NPT



Serie	Ø Tubo D	S	L	F		TAA
LL	4	10	22.5	1/8" NPT	T-GE 4-LL 1/8"NPT	10501011
	6	12	22.5	1/8" NPT	T-GE 6-LL 1/8"NPT	10503011
	8	12	22.5	1/8" NPT	T-GE 8-LL 1/8"NPT	10504011
L	6	12	24	1/8" NPT	T-GE 6-L 1/8"NPT	10500011
		17	24	1/4" NPT	T-GE 6-L 1/4"NPT	10500111
	8	17	31	1/4" NPT	T-GE 8-L 1/4"NPT	10505011
		19	32	3/8" NPT	T-GE 8-L 3/8"NPT	10505311
	10	17	32	1/4" NPT	T-GE 10-L 1/4"NPT	10510011
		19	32	3/8" NPT	T-GE 10-L 3/8"NPT	10510111
	12	19	33	3/8" NPT	T-GE 12-L 3/8"NPT	10515011
			32	1/4" NPT	T-GE 12-L 1/4"NPT	10515111
		22	33	1/2" NPT	T-GE 12-L 1/2"NPT	10515211
	15	24	39	1/2" NPT	T-GE 15-L 1/2" NPT	10520011
			32	3/8" NPT	T-GE 15-L 3/8" NPT	10520211
30		41	3/4" NPT	T-GE 15-L 3/4" NPT	10520411	
18	27	40.5	1/2" NPT	T-GE 18-L 1/2" NPT	10525011	
22	30	42.5	3/4" NPT	T-GE 22-L 3/4" NPT	10530011	
28	41	48.5	1" NPT	T-GE 28-L 1" NPT	10535011	
35	46	51.5	1"1/4 NPT	T-GE 35-L 1"1/4 NPT	10540011	
42	55	54	1"1/2 NPT	T-GE 42-L 1"1/2 NPT	10545011	

Raccordi d'estremità diritti

Filettatura: NPT

Male stud couplings

Stud thread: NPT

Gerade Einschraubverschraubungen

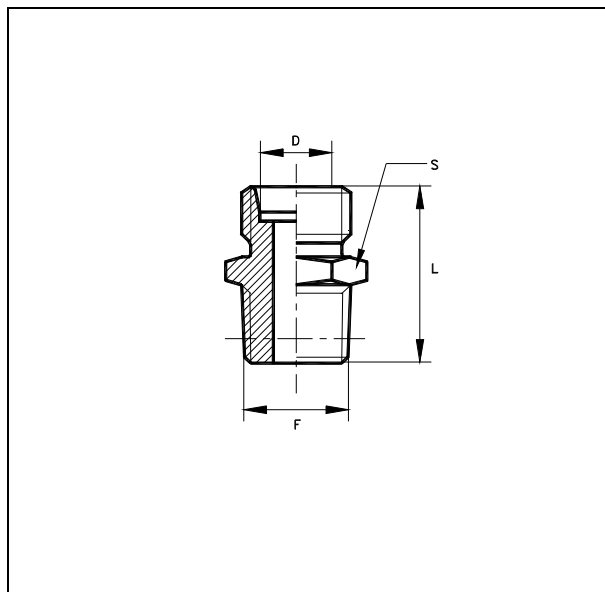
Einschraubgewinde: NPT

Unions simple mâles

Filetage: NPT

Racores rectos

Rosca: NPT



Serie	Ø Tubo D	S	L	F		TAA
S	6	17	36	1/4" NPT	T-GE 6-S 1/4" NPT	10550011
	8	17	36	1/4" NPT	T-GE 8-S 1/4" NPT	10555011
	10	19	36.5	3/8" NPT	T-GE 10-S 3/8" NPT	10560011
	12	22	38.5	3/8" NPT	T-GE 12-S 3/8" NPT	10565011
	14	24	46	1/2" NPT	T-GE 14-S 1/2" NPT	10570011
	16	27	45.5	1/2" NPT	T-GE 16-S 1/2" NPT	10575011
	20	32	48.5	3/4" NPT	T-GE 20-S 3/4" NPT	10580011
	25	41	57	1" NPT	T-GE 25-S 1" NPT	10585011
	30	46	59.5	1"1/4 NPT	T-GE 30-S 1"1/4 NPT	10590011
	38	55	64	1"1/2 NPT	T-GE 38-S 1"1/2 NPT	10595011

Istruzione di montaggio

1. Oleare i filetti d'estremità e le 2 O-ring.
2. Infilare la vite inferiore nel corpo del raccordo ed avvitare a mano.
3. Orientare il lato collegamento tubo e serrare la vite con la coppia di serraggio prescritto (vedere generalità, controbilanciando il corpo del raccordo)
4. Montare il tubo, controbilanciando il corpo del raccordo.
5. Mettere il tappo e serrare con la coppia prescritta (mass. _ giro).
6. Si può smontare e rimontare il raccordo senza limitazioni.
Verificare lo stato degli anelli torici e sostituire se necessario.

Attenzione : Un montaggio non conforme (lubrificazione o danneggiamento dell'O-ring superiore) riduce la pressione nominale e la durata della guarnizione con rischio di perdite.

Assembly instructions

1. Oil the threads and the 2 O-ring.
2. Insert the bolt into the banjo and tighten by hand.
3. Set the tube connection to the desired direction and tighten the bolt with the recommended tightening torque (see Technical notes) holding the banjo firmly by means of a spanner.
4. Fix the tube holding the banjo firmly by means of a spanner.
5. Set the blanking plug and tighten with the recommended tightening torque (max. _ of turn) holding the body of the coupling firmly by means of a spanner.
6. Repeated reassembly is possible. Check seals for possible damage and replace if necessary.

Attention : Different assembly (lubrication or damaging of the O-rings) reduces the nominal pressure rating and the life of the coupling, causing leakages.